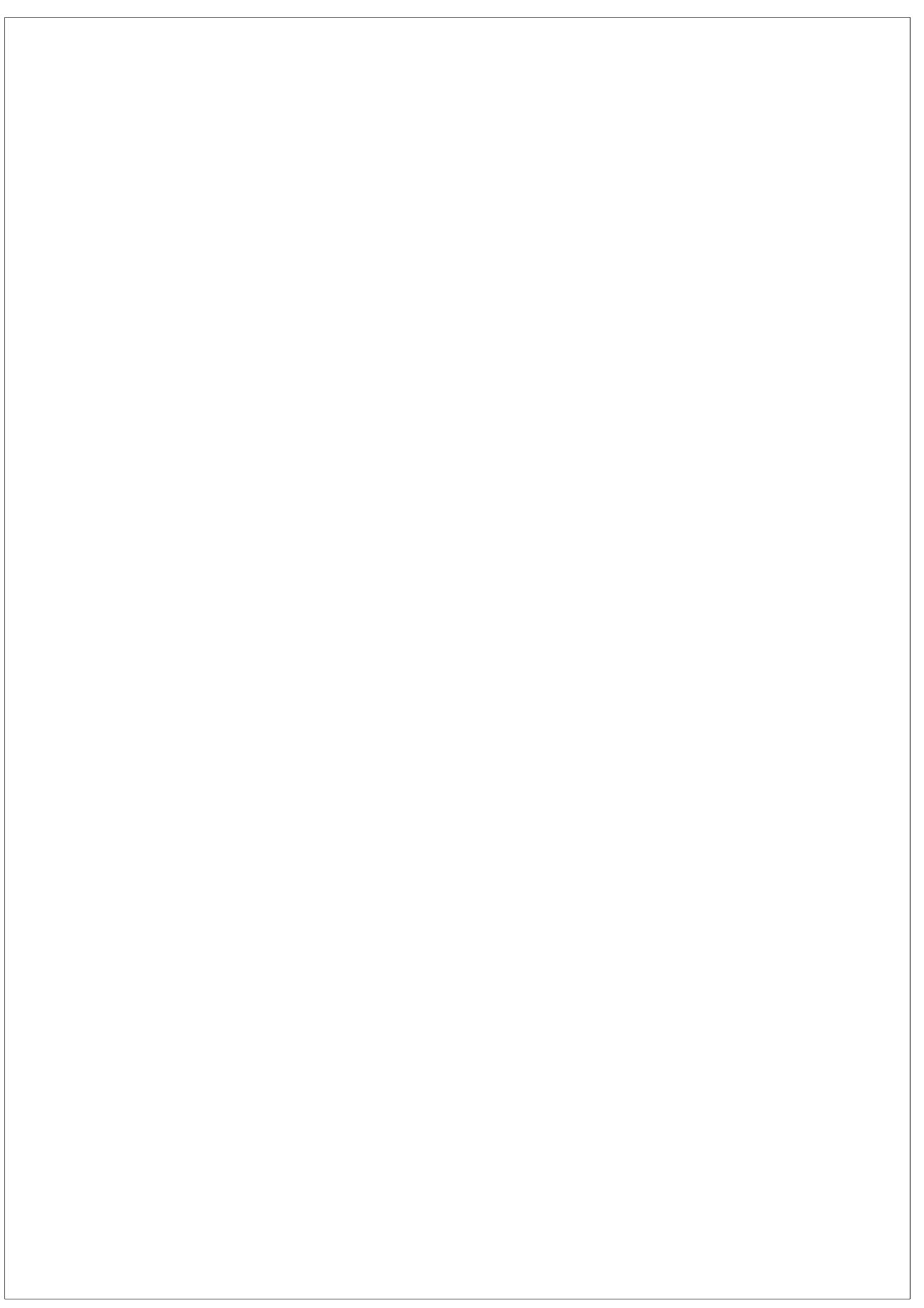
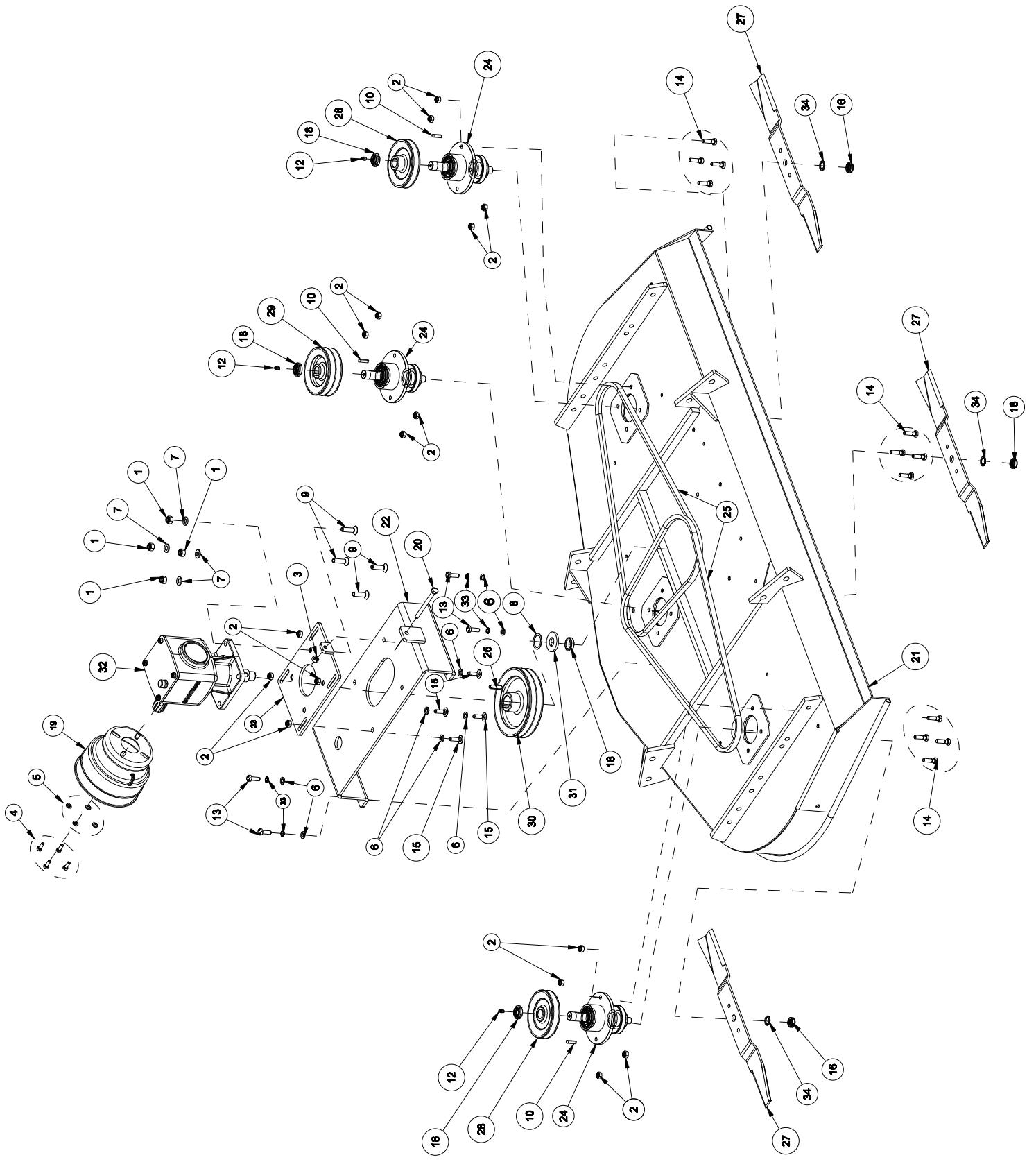


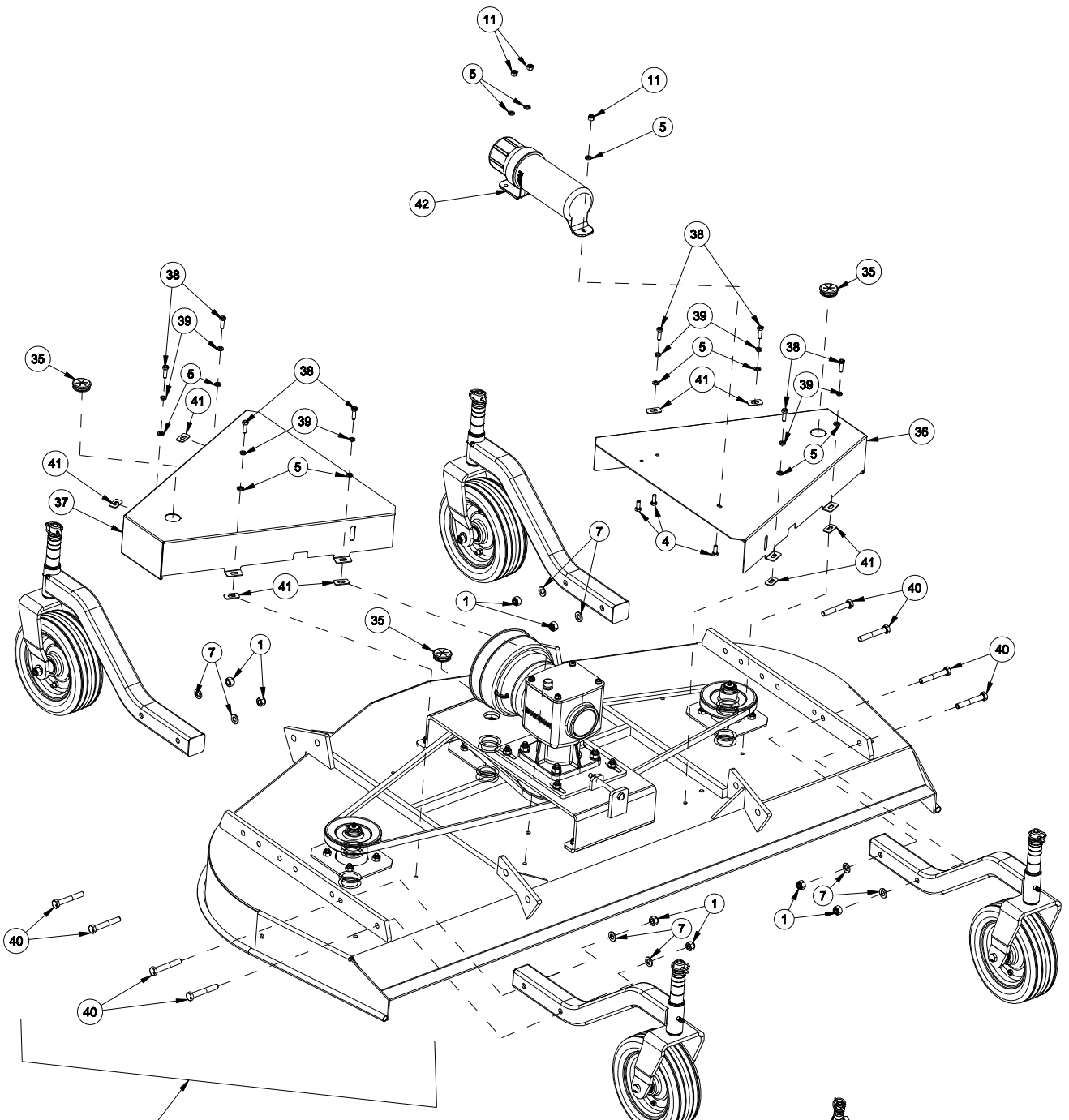
**PARTS MANUAL  
SGM SERIES  
GROOMING MOWER**



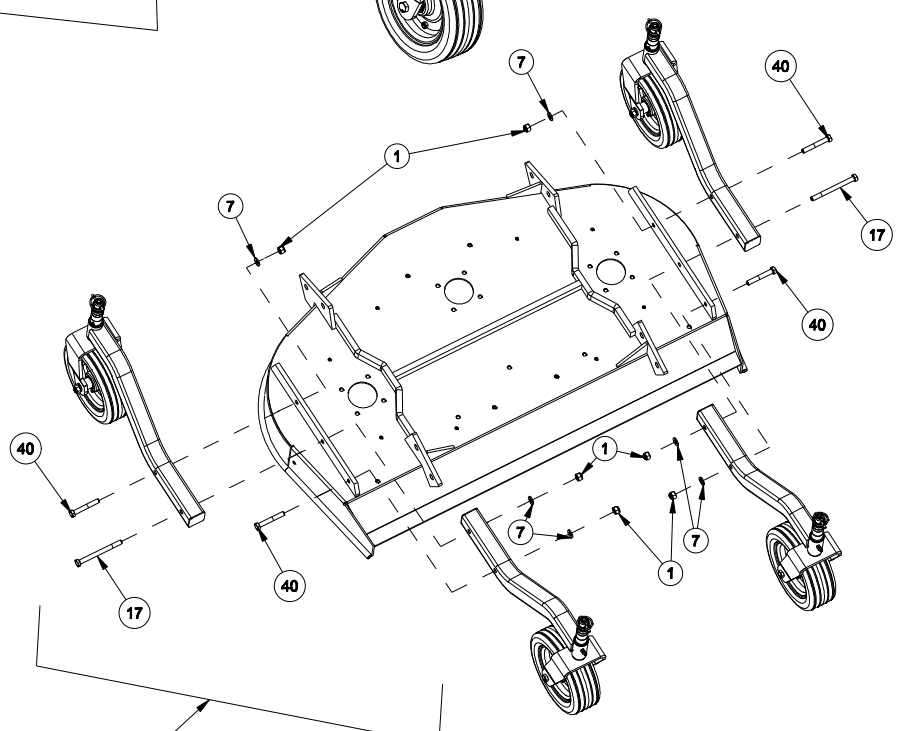
# SGM SERIES GROOMING MOWER - SPARE PARTS

## TABLE\_1 - KIT FRAME ASSEMBLY





SGM- 2.1  
 SGM- 1.8  
 SGM- 1.5



SGM- 1.2

**SGM SERIES GROOMING MOWER - SPARE PARTS**

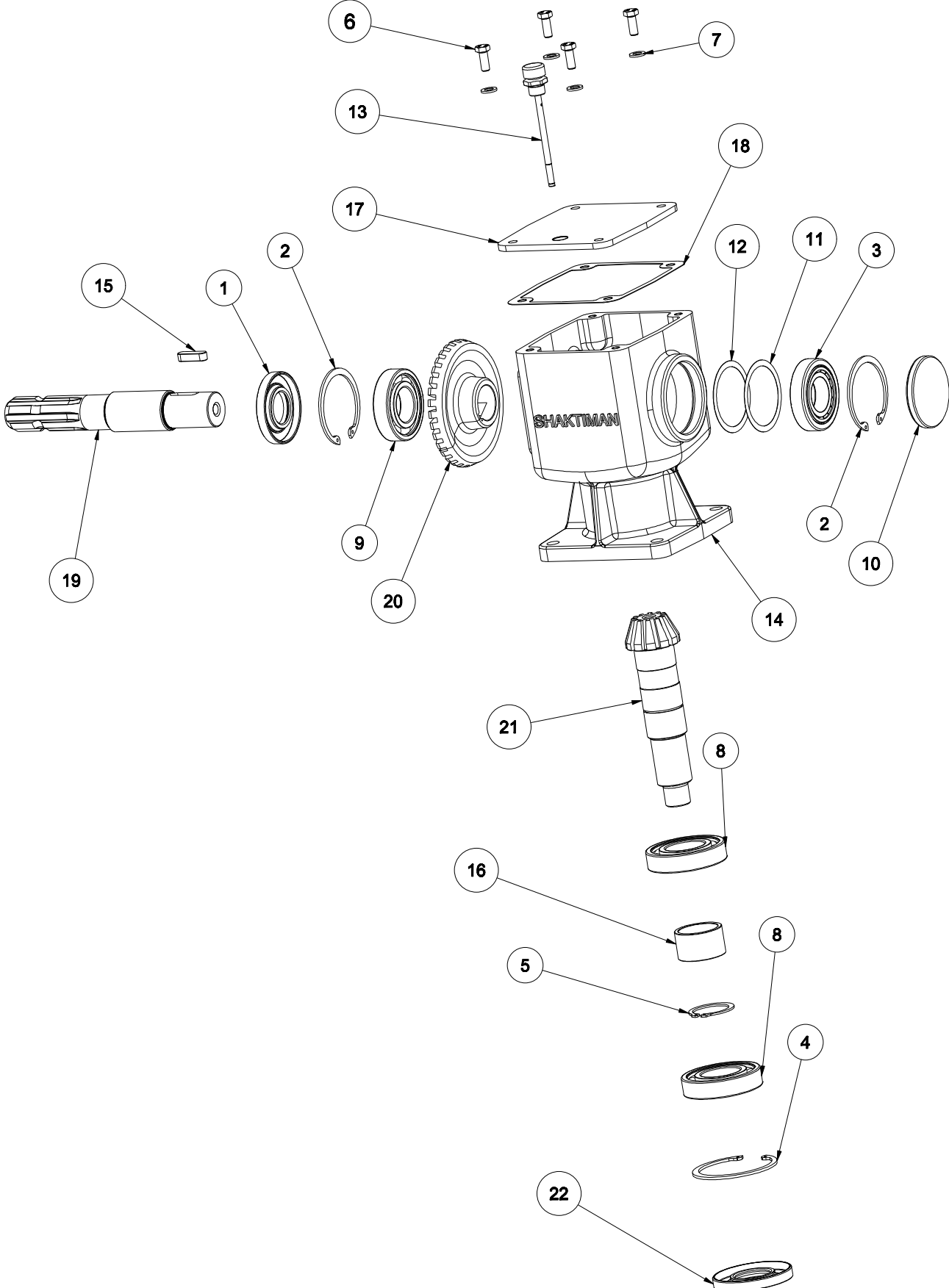
**TABLE\_1 - KIT FRAME ASSEMBLY**

<b>Sr No.</b>	<b>MANUAL NO.</b>	<b>PART NAME</b>	<b>REMARK</b>	<b>QTY.</b>
1	1209	NYLOCK NUT M12 X 1.75	SGM:- 1.8	12
			SGM:- 1.5	
			SGM:- 2.1	
			SGM:- 1.2	10
2	1298	NYLOCK NUT M10 X 1.50		16
3	1299	HEX NUT M10 X 1.50		1
4	8040	HEX BOLT M8 X 1.25 X 20		7
5	8064	PLAIN WASHER 8mm		15
6	8078	PLAIN WASHER 10mm		8
7	8126	PLAIN WASHER 12mm	SGM:- 1.8	12
			SGM:- 1.5	
			SGM:- 2.1	
			SGM:- 1.2	10
8	1425	SIMS (DIA 45 X 35)(1.0MM)		1
9	2607	CSK BOLT M12 X 1.75 X 45		4
10	18168	KEY 8 X 7 X 32		3
11	1297	NYLOCK NUT M8X1.25 (DIN-982)		3
12	6559	GREASE NIPPLE M8 X 1		3
13	3340	HEX BOLT M10 X 1.50 X 30 (8.8) DIN933	SGM:- 1.8	4
			SGM:- 2.1	
			SGM:- 1.5	16
			SGM:- 1.2	
14	1209	HEX BOLT M10 X 1.50 X 35 (8.8) DIN931	SGM:- 1.8	12
			SGM:- 2.1	
15	25745	ROUND HEAD SQ. NECK BOLT M10 X 1.5 X 35		4
16	33113	GUA SELF LOCKING NUT M18X1.5		3
17	33037	HEX BOLT M12X1.75X135(HT)(8.8)DIN931	SGM:- 1.2	2
18	33006	GUK SELF LOCKING NUT M25X1.5		4
19	17788	PTO SHAFT GUARD PLASTIC		1
20	1209	HEX BOLT M10 X 1.50 X 115(FT)(8.8)DIN933	SGM:- 2.1	1
			SGM:- 1.8	
	33108	HEX BOLT M10 X 1.50 X 90 (FT)(8.8)DIN933	SGM:- 1.5	
	33102	HEX BOLT M10 X 1.50 X 75 (FT)(8.8)DIN933	SGM:- 1.2	
21	33012	FRAME WELDMENT (SGM-2.1M)		1
	33013	FRAME WELDMENT (SGM-1.2M)		
	33014	FRAME WELDMENT (SGM-1.5M)		
	33015	FRAME WELDMENT (SGM-1.8M)		
22	33019	GEARBOX SUPPORT WELDMENT (SGM-1.8M)		1
	33016	GEARBOX SUPPORT WELDMENT (SGM-2.1M)		
	33017	GEARBOX SUPPORT WELDMENT (SGM-1.2M)		
	33018	GEARBOX SUPPORT WELDMENT (SGM-1.5M)		
23	33020	GEARBOX SUPPORT PLATE (SGM)		1
24	33043	SPINDLE ASSEMBLY (6206 BEARINGS) (SGM)		3

25	33110	SET OF SPB BELT LD=2340 (2 NOS)(SGM 2.1)	SGM:- 2.1	1
	33051	SET OF SPB BELT LD=1500(2 NOS)(SGM 1.2)	SGM:- 1.2	
	33052	SET OF SPB BELT LD=1750(2 NOS)(SGM 1.5)	SGM:- 1.5	
	33111	SET OF SPB BELT LD=1950(2 NOS)(SGM 1.8)	SGM:- 1.8	
26	33054	PARALLEL KEY 10 X 8 X 40		1
27	33057	BLADE, MOWER 60 X 6 X L-618 (SGM-1.8M)		3
	33055	BLADE, MOWER 60 X 6 X L-424 (SGM-1.2M)		
	33056	BLADE, MOWER 60 X 6 X L-516 (SGM-1.5M)		
	33010	BLADE, MOWER 60 X 8 X L-730 (SGM-2.1M))		
28	1209	SPB TYPE PULLEY PCD=130, 1 GROOVE (SGM)	SGM:- 1.8 SGM:- 1.5	2
	33058	SPB TYPE PULLEY PCD=110, 1 GROOVE (SGM)	SGM:- 1.2	
	33002	SPB TYPE PULLEY PCD=160, 1 GROOVE (SGM)	SGM:- 2.1	
29	33003	SPB TYPE PULLEY PCD=160, 2 GROOVE (SGM)	SGM:- 2.1	1
	33060	SPB TYPE PULLEY PCD=110, 2 GROOVE (SGM)	SGM:- 1.2	
	1209	SPB TYPE PULLEY PCD=130, 2 GROOVE (SGM)	SGM:- 1.8	
			SGM:- 1.5	
30	33004	SPB TYPE PULLEY PCD=212, 2 GROOVE (SGM)	SGM:- 2.1	1
	1209	SPB TYPE PULLEY PCD=225, 2 GROOVE (SGM)	SGM:- 1.5	
			SGM:- 1.2	
	33063	SPB TYPE PULLEY PCD=190, 2 GROOVE (SGM)	SGM:- 1.8	
31	33079	WASHER, DRIVING PULLEY 25X56X6 (SGM)		1
32	33085	GEAR BOX ASSEMBLY(SGM)		1
33	33099	WASHER SCHNNOR M10 (SGM)		4
34	33100	WASHER SCHNNOR M18 (SGM)		3
35	33021	ZERK CAP (SGM)		3
36	33086	BELT COVER AND ROD ASSEMBLY RH-(SGM-2.1)		1
	33088	BELT COVER AND ROD ASSEMBLY RH-(SGM-1.2)		
	33090	BELT COVER AND ROD ASSEMBLY RH-(SGM-1.5)		
	33092	BELT COVER AND ROD ASSEMBLY RH-(SGM-1.8)		
37	33087	BELT COVER AND ROD ASSEMBLY LH-(SGM-2.1)		1
	33089	BELT COVER AND ROD ASSEMBLY LH-(SGM-1.2)		
	33091	BELT COVER AND ROD ASSEMBLY LH-(SGM-1.5)		
	33093	BELT COVER AND ROD ASSEMBLY LH-(SGM-1.8)		
38	8171	HEX BOLT M8 X 1.25 X 25		8
39	1303	SPRING WASHER 8mm		8
40	1209	HEX BOLT M12 X 1.75 X 80(HT)(8.8)DIN931	SGM:- 1.8	8
			SGM:- 1.5	
			SGM:- 2.1	
			SGM:- 1.2	
41	33101	GASKET, BELT COVER (SGM)		8
42	1616	CONTAINER FOR MANUAL		1

# SGM SERIES GROOMING MOWERS - SPARE PARTS

## TABLE\_2 - GEAR BOX ASSEMBLY



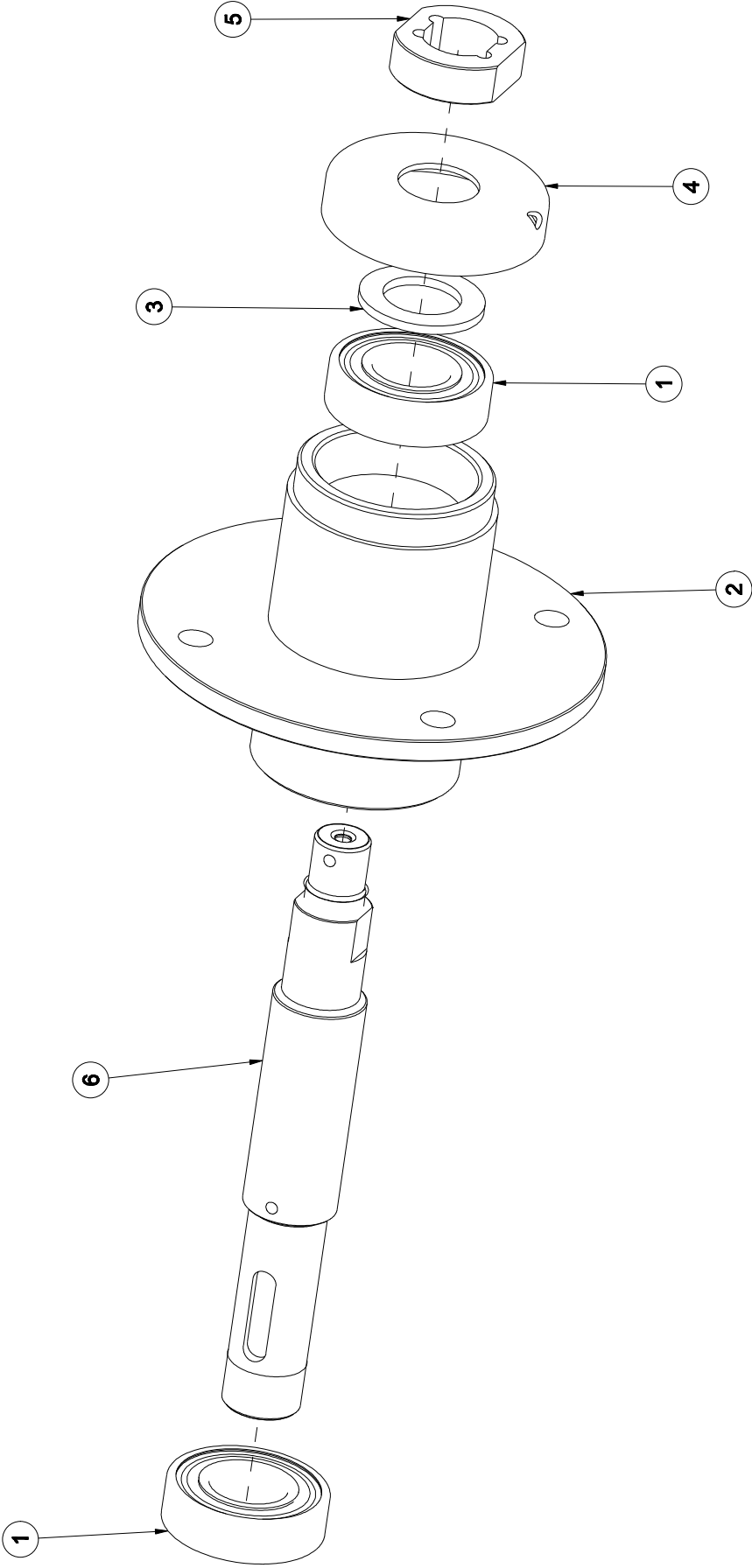
# SGM SERIES GROOMING MOWER - SPARE PARTS

## TABLE\_2 - GEARBOX ASSEMBLY

Sr No.	MANUAL NO.	PART NAME	QTY.
1	1001	OIL SEAL 35 X 72 X 10	1
2	1002	CIRCLIP INTERNAL 72mm	2
3	1003	BEARING 30207	1
4	1130	CIRCLIP INTERNAL 80mm	1
5	8027	CIRCLIP EXTERNAL 40mm	1
6	8040	HEX BOLT M8 X 1.25 X 20	4
7	8064	PLAIN WASHER 8MM (BS-4320)	4
8	7033	BEARING 6208	2
9	10143	BEARING 6207	1
10	14119	OIL SEAL 72X8	1
11	4652	SIMS (DIA 72 X 60)(0.20mm)	1
12	4653	SIMS (DIA 72 X 60)(0.30mm)	1
13	14316	DIPSTICK 106MM (M16 X 1.5) (1MLSR202)	1
14	33005	GEAR BOX HOUSING (SGM)	1
15	33050	PARALLEL KEY 10 X 8 X 32	1
16	33078	SPACER, PINION 40X48X28 (SGM)	1
17	33080	GEARBOX COVER (SGM)	1
18	33081	GASKET, GEARBOX COVER (SGM)	1
19	33082	INPUT SHAFT, (SGM)	1
20	33083	BEVEL GEAR Z-34 TEETH (SGM)	1
21	33084	BEVEL PINION SHAFT 12 TEETH (SGM)	1
22	35005	OIL SEAL 40 X 80 X 10 (MAX)	1



**SGM GROOMING MOWERS - SPARE PARTS**  
**TABLE\_3 - SPINDLE ASSEMBLY (6205 / 6206)**

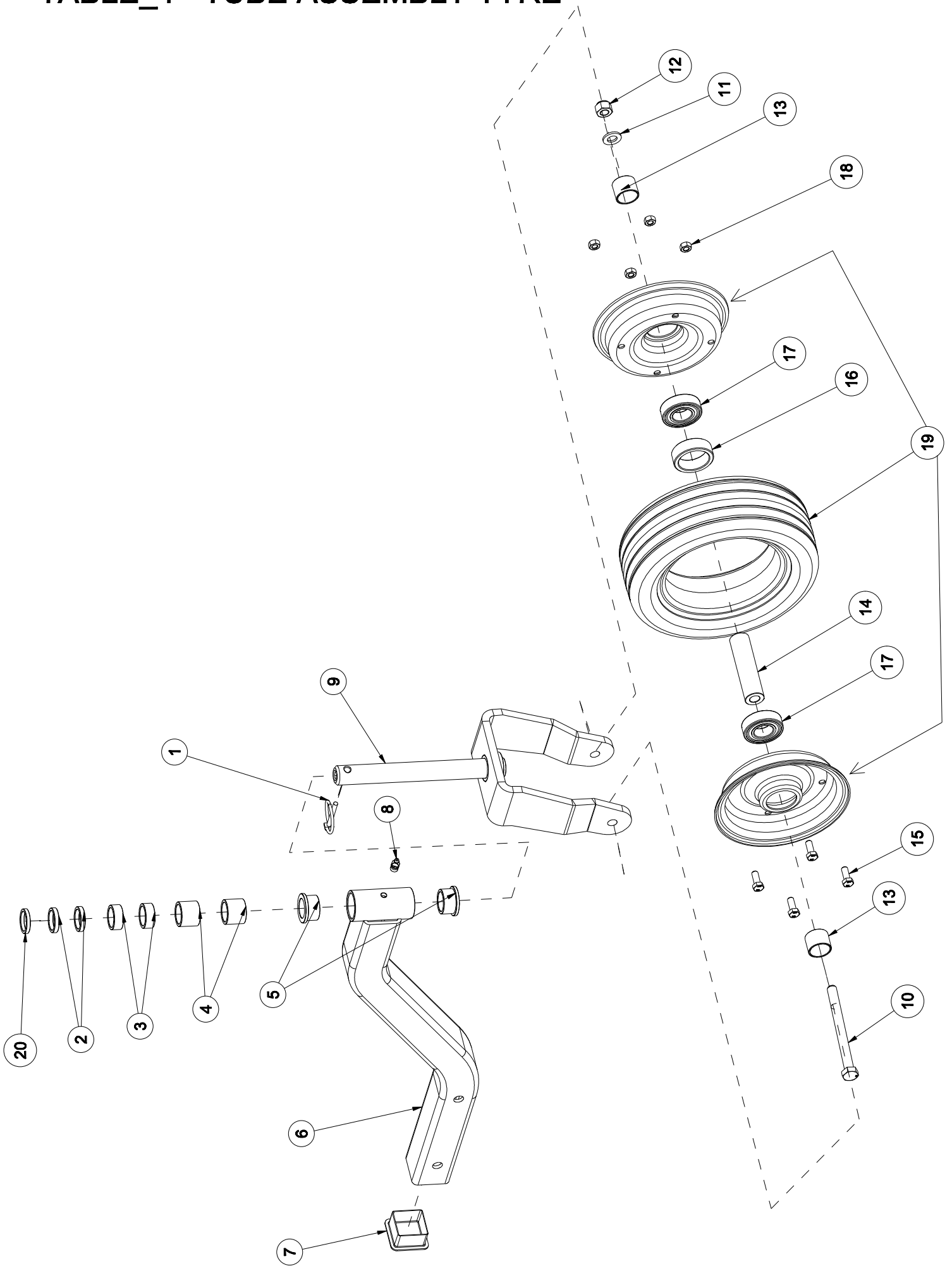


**SGM SERIES GROOMING MOWER - SPARE PARTS**  
**TABLE 3 - SPINDLE ASSEMBLY (6205 / 6206)**

<b>Sr No.</b>	<b>MANUAL NO.</b>	<b>PART NAME</b>	<b>QTY.</b>
1	8105	BEARING 6205 2RS	2
	12210	BEARING 6206 2RS	2
2	33044	SPINDLE (BEARINGS 6205) (SGM)	1
	33038	SPINDLE (BEARINGS 6206) (SGM)	1
3	33045	SPACER WASHER 25X40X3 (6205) (SGM)	1
	33040	SPACER WASHER (30X60X5) (6206) (SGM)	1
4	33046	DUST PROTECTION COVER (6205) (SGM)	1
	33041	DUST PROTECTION COVER (6206) (SGM)	1
5	33047	BUSHING, BLADE TIGHTENING (6205) (SGM)	1
	33042	BUSHING, BLADE TIGHTENING (6206) (SGM)	1
6	33048	SHAFT, SPINDLE - (BEARINGS 6205) (SGM)	1
	33039	SHAFT, SPINDLE - (6206 BEARINGS) (SGM)	1

# SGM SERIES GROOMING MOWERS - SPARE PARTS

## TABLE\_4 - TUBE ASSEMBLY TYRE

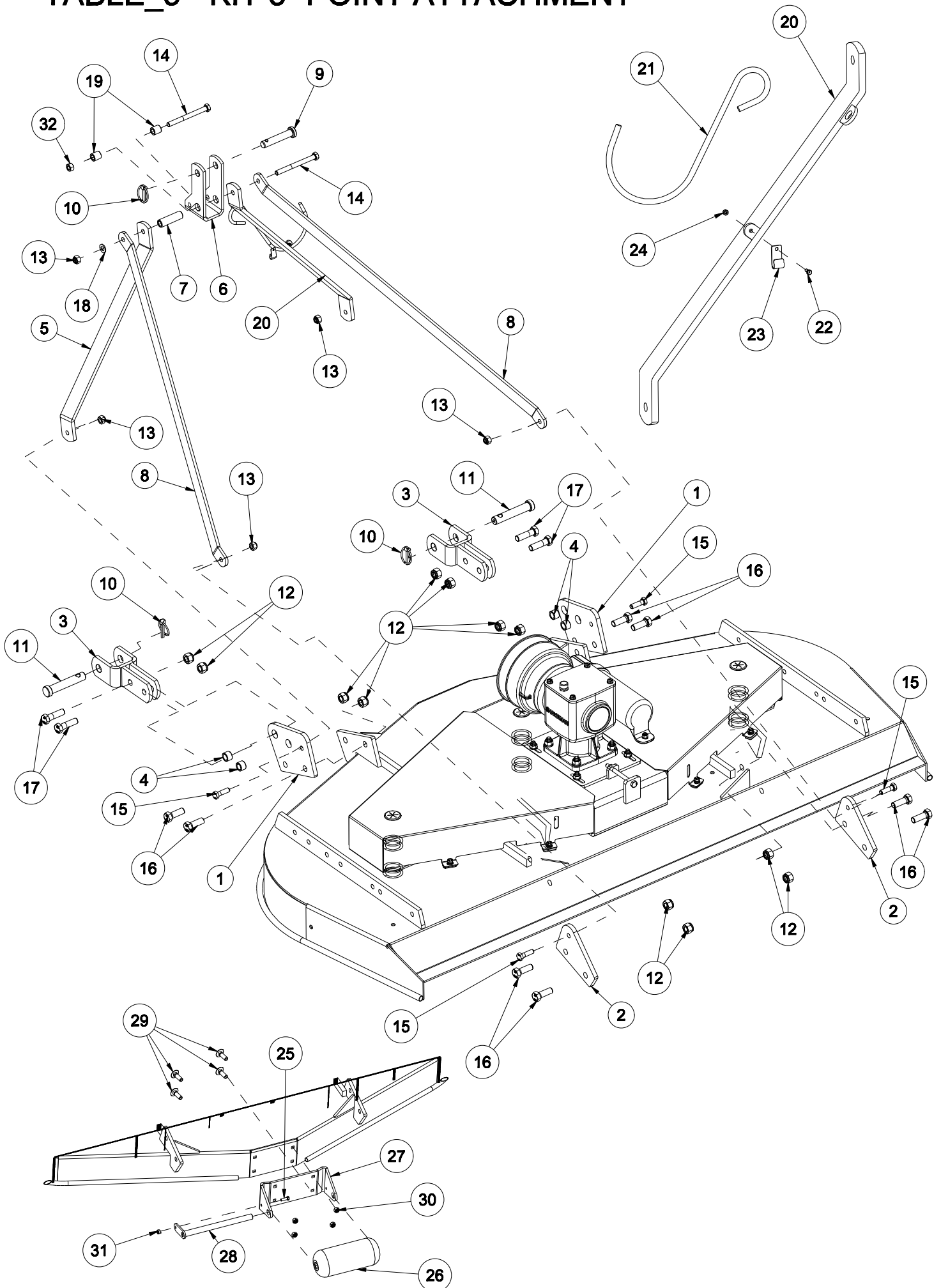


**SGM SERIES GROOMING MOWERS - SPARE PARTS**  
**TABLE\_4 - TUBE ASSEMBLY TYRE**

<b>Sr. No.</b>	<b>MANUAL NO.</b>	<b>PART NAME</b>	<b>QTY.</b>
1	8204	LINCH PIN SMALL (CHO)	1
2	33073	SPACER 25X32X6 (SGM)	2
3	33074	SPACER 25X32X12.5 (SGM)	2
4	33075	SPACER 25X32X25 (SGM)	2
5	33007	PLASTIC BEARING MFM-2532-20	2
6	33064	WHEEL HALF-ARM WELDMENT (SGM)	1
7	23163	SQ. PIPE PLASTIC CAP 50MM	1
8	20148	GREASE NIPPLE M8 X 1.25	1
9	33068	WHEEL YOKE REINF. WELD. (10MM) (SGM)	1
10	33037	HEX BOLT M12X1.75X135(HT)(8.8)DIN931	1
11	8126	PLAIN WASHER 12mm	1
12	1209	NYLOCK NUT M12X1.75 (DIN-982)	1
13	33070	SPACER, SOLID TYRE(30X26X23.5) (SGM)	2
14	33069	WHEEL MOUNTING PIPE (SGM)	1
15	8040	HEX BOLT M8 X 1.25 X 20	4
16	33065	SPACER 52X40X17 (SGM)	1
17	8105	BEARING 6205 2RS	2
18	8181	HEX NUT M8 X 1.25	4
19	33008	SOLID TYRE 10"X4" (SGM)	1
20	33116	SPACER 25X32X5 (SGM)	1

# SGM SERIES GROOMING MOOWERS - SPARE PARTS

## TABLE\_5 - KIT 3- POINT ATTACHMENT

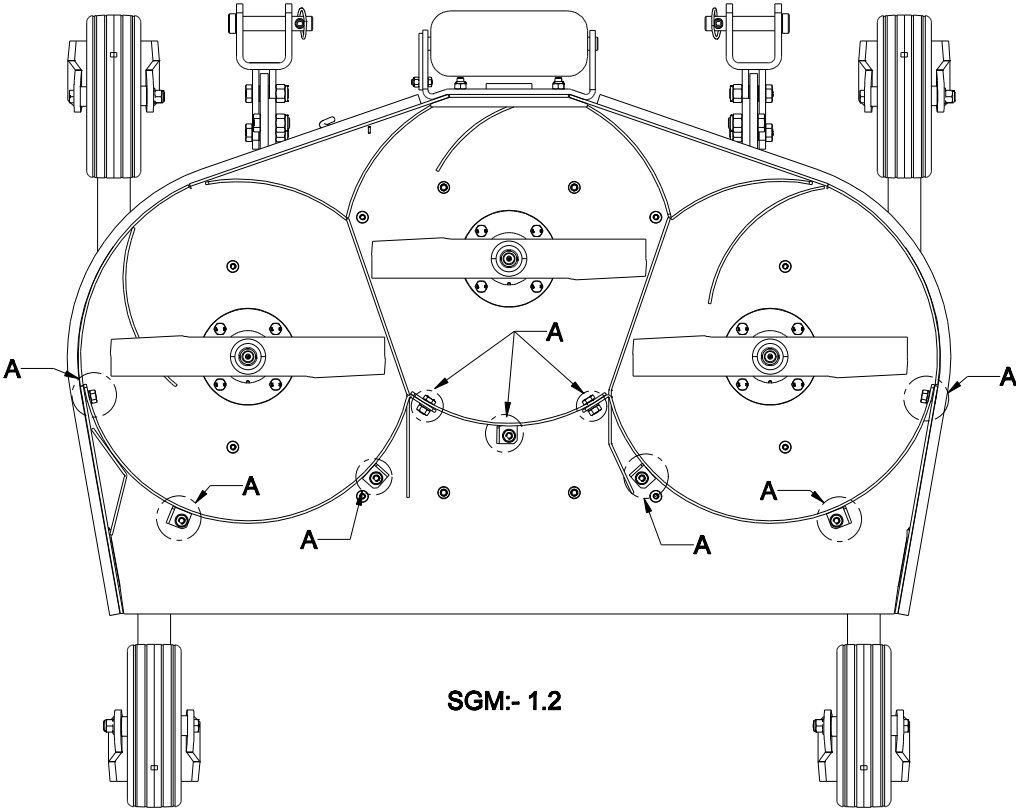
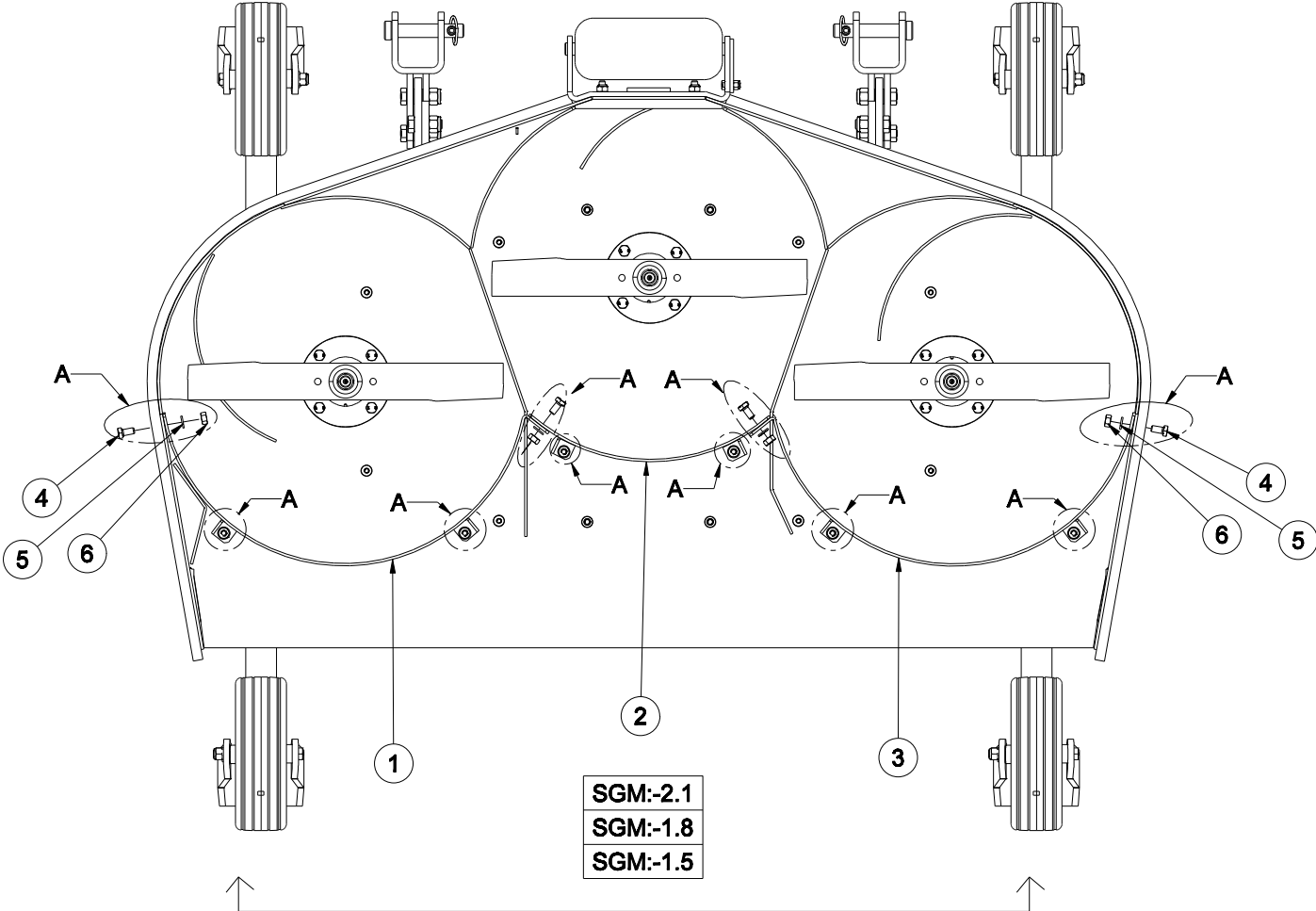


## SGM SERIES GROOMING MOOWERS - SPARE PARTS TABLE 5 - KIT 3- POINT ATTACHMENT

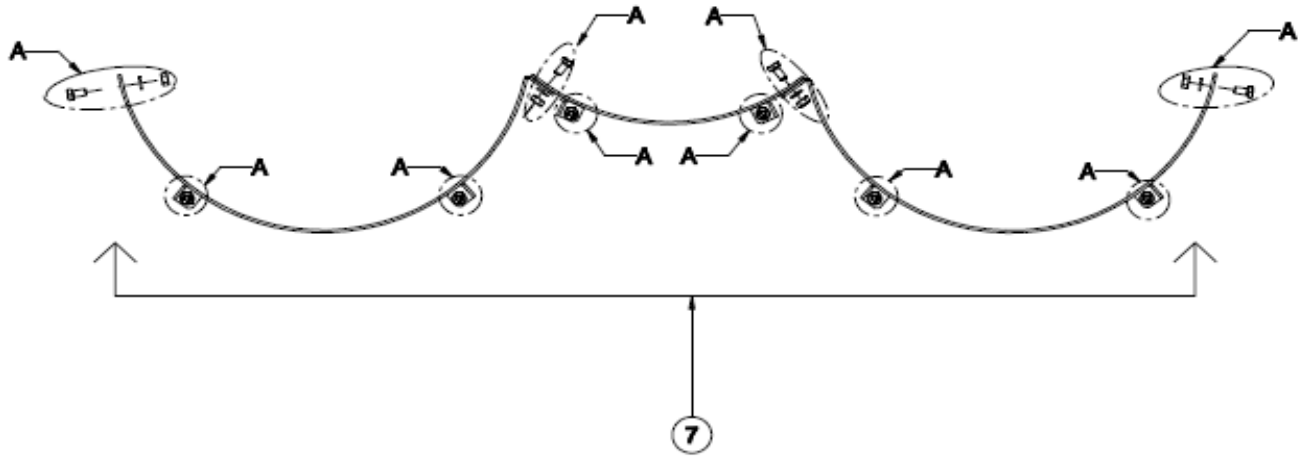
Sr.No.	Manual Code	PART NAME	Qty.
1	33025	CONNECTION PLATE, FRONT (SGM)	2
2	33026	CONNECTION PLATE, REAR (SGM)	2
3	33035	WELDED YOKE, LOWER HITCH (SGM)	2
4	33027	BUSHING, LOWER HITCH (SGM)	4
5	33028	TOP HITCH SUPPORT (LH) (SGM)	1
6	33029	COUPLING, UPPER 3-POINT HITCH (SGM)	1
7	33030	SPACER, UPPER 3 POINT HITCH (SGM)	1
8	33031	TOP HITCH ARM (SGM-2.1M)	2
	33032	TOP HITCH ARM, (SGM-1.2M)	
	33033	TOP HITCH ARM (SGM-1.5M)	
	33034	TOP HITCH ARM (SGM-1.8M)	
9	33036	PIN, TOP HITCH (CATEGORY I) (SGM)	1
10	1218	LINCH PIN	3
11	1216	HITCH PIN BOTTOM CAT-I (DIA-22 X 129)	2
12	1231	NYLOCK NUT M16X2.0 (DIN-982)	12
13	1209	NYLOCK NUT M12X1.75 (DIN-982)	5
14	33104	HEX BOLT M12X1.75X130(HT)(8.8) DIN931	2
15	3343	HEX BOLT M12 X 1.75 X 40 (8.8) DIN931	4
16	8196	HEX BOLT M16 X 2 X 45	8
17	18446	HEX BOLT M16 X 2 X 55 (8.8)	4
18	8126	PLAIN WASHER 12MM (BS-4320)	1
19	33115	BUSH 21X13X22 (SGM)	2
20	33117	TOP HITCH SUPPORT WELDMENT (SGM)	1
21	14340	DRIVELINE HOOK 250MM	1
22	23029	HEX BOLT M4 X 0.75 X 10	1
23	23147	PLATE, HOOK HOLDING (JUMBO)	1
24	23028	HEX NUT M4 X 0.75	1
25	8171	HEX BOLT M8 X 1.25 X 25	1
26	33024	FRONT ROLLER, AIR WHEELS (SGM)	1
27	33023	BRACKET, FRONT ROLLER (SGM)	1
28	33022	ROD WELDMENT, FRONT ROLLER (SGM)	1
29	8174	RO HD SQ NECK BOLT M10 X 1.5 X 30 FT-8.8	4
30	1298	NYLOCK NUT M10X1.50 (DIN-982)	4
31	1297	NYLOCK NUT M8X1.25 (DIN-982)	1
32	1301	HEX NUT M12 X 1.75	1

# SGM GROOMING MOWERS - SPARE PARTS

## TABLE\_6 - MULCHING KIT ASSEMBLY



## MULCHING KIT



**SGM SERIES GROOMING MOOWERS - SPARE PARTS**  
**TABLE\_6 - MULCHING KIT ASSEMBLY**

Sr.No.	MANUAL NO.	PART NAME	REMARK	QTY.
1	33120	CONTAINING PLATE WELDMENT LH (SGM-1.2M)	SGM:- 1.2	1
	33123	CONTAINING PLATE WELDMENT LH (SGM-1.5M)	SGM:- 1.5	
	33126	CONTAINING PLATE WELDMENT LH (SGM-1.8M)	SGM:- 1.8	
	33129	CONTAINING PLATE WELDMENT LH (SGM-2.1M)	SGM:- 2.1	
2	33119	CONTAINING PLATE WELD. MIDDLE (SGM-1.2M)	SGM:- 1.2	1
	33122	CONTAINING PLATE WELD. MIDDLE (SGM-1.5M)	SGM:- 1.5	
	33125	CONTAINING PLATE WELD. MIDDLE (SGM-1.8M)	SGM:- 1.8	
	33128	CONTAINING PLATE WELD. MIDDLE (SGM-2.1M)	SGM:- 2.1	
3	33118	CONTAINING PLATE WELDMENT RH (SGM-1.2M)	SGM:- 1.2	1
	33121	CONTAINING PLATE WELDMENT RH (SGM-1.5M)	SGM:- 1.5	
	33124	CONTAINING PLATE WELDMENT RH (SGM-1.8M)	SGM:- 1.8	
	33127	CONTAINING PLATE WELDMENT RH (SGM-2.1M)	SGM:- 2.1	
4	17276	HEX BOLT M10 X 1.50 X 20(FT)(8.8) DIN933	SGM:- 1.2	9
			SGM:- 1.5	10
			SGM:- 1.8	10
			SGM:- 2.1	10
5	1299	Hex Nut M10X1.50(IS 1363)(8)(ZP)	SGM:- 1.2	9
			SGM:- 1.5	10
			SGM:- 1.8	10
			SGM:- 2.1	10
6	8078	PLAIN WASHER 10MM (BS-4320)	SGM:- 1.2	9
			SGM:- 1.5	10
			SGM:- 1.8	10
			SGM:- 2.1	10
7	33130	MULCHING KIT ASSEMBLY (SGM-1.2M)	SGM:- 1.2	1
	33131	MULCHING KIT ASSEMBLY (SGM-1.5M)	SGM:- 1.5	
	33132	MULCHING KIT ASSEMBLY (SGM-1.8M)	SGM:- 1.8	
	33133	MULCHING KIT ASSEMBLY (SGM-2.1M)	SGM:- 2.1	