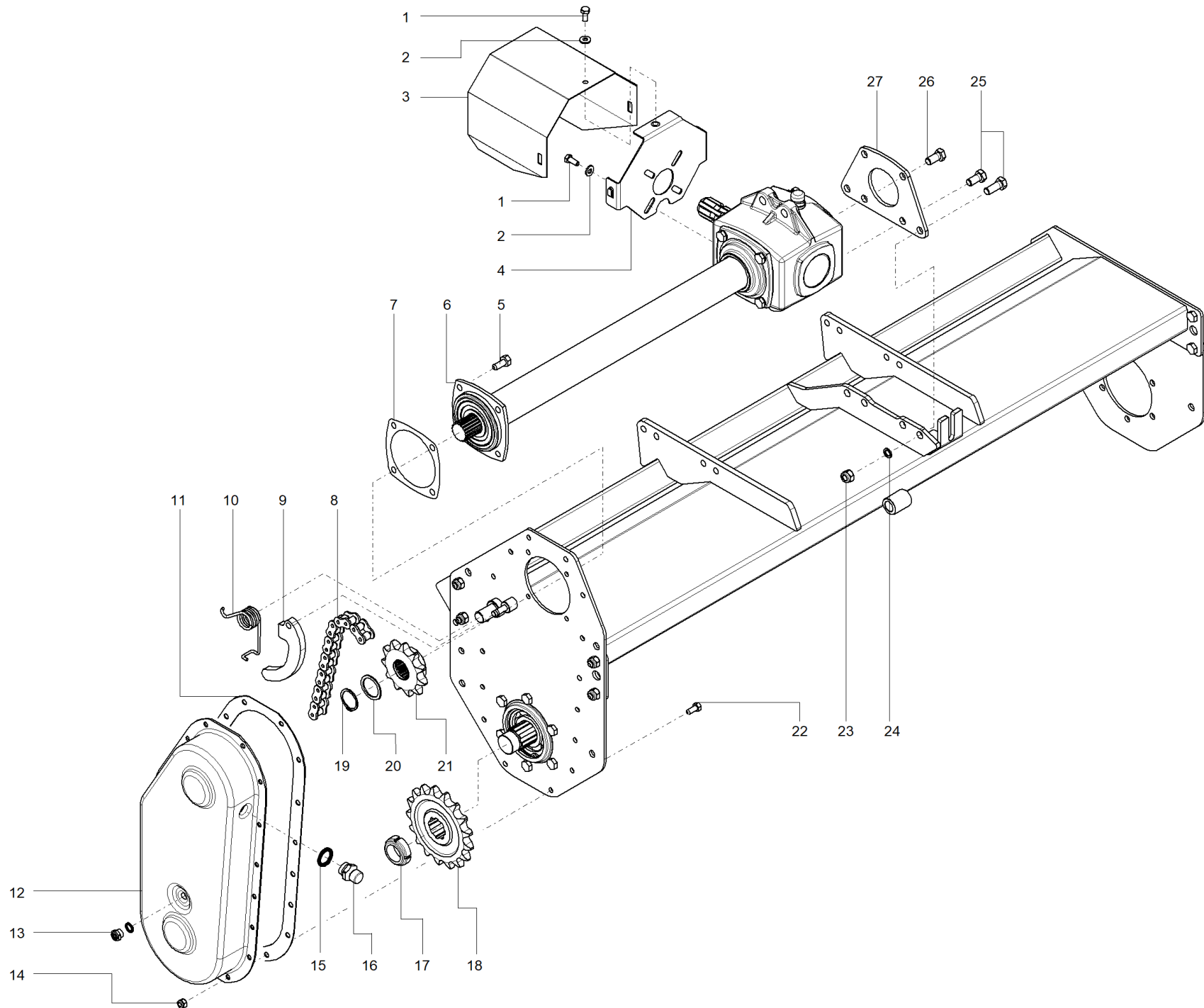


Machine type: TILLER
Model: ZLL
Group: Tractor hitches

Document ID: 902874008
Revision: 05_03/03/2019 ->
Table: 01

Reference	P/N	Description	Model #	Quantity
1	3464101012	UNI7473 (coarse pitch) M12 zinc plated nut		1
2	4001331	ZLL upper 3rd point coupling		1
3	4201202	ZLL 3rd point lower tie		1
4	3021108016	Screw UNI5739 8.8 M8x16 galvanised (coarse pitch)		1
5	4337002	200 hook for shaft drive		1
6	5137068	RC/SA coupling support hook clip		1
7	4001330	ZLL top hitch frame		1
8	3464101008	UNI7473 (coarse pitch) M8 zinc plated nut		1
9	6351004	Split pin Ad R Ø4 galvanised		1
10	4001328	ZLL right upper 3rd point coupling		1
11	3021112080	Screw TE M12x90 UNI5739		1
12	4001278	ZLL lower 3rd point coupling		1
13	4301590	SL/.../FA/.../BH/.../RG lower 3rd point pin		1
14	4531701	ZLL upper 3rd point spacer		1
15	3625000012	Grower washer DIN1751 C70 Øi12		1
16	4301589	RC lower 3rd point pin		1
17	4001329	ZLL left upper 3rd point coupling		1
18	3021112030	Screw UNI5739 8.8 M12x30 galvanised (coarse pitch)		1
19	4011519	SF/CS lower 3rd point		1
20	3464101014	UNI7473 (coarse pitch) M14 zinc plated nut		1
21	4201513	CS/RC 3rd point fastening tie		1



Machine type: TILLER

Document ID: 902874008

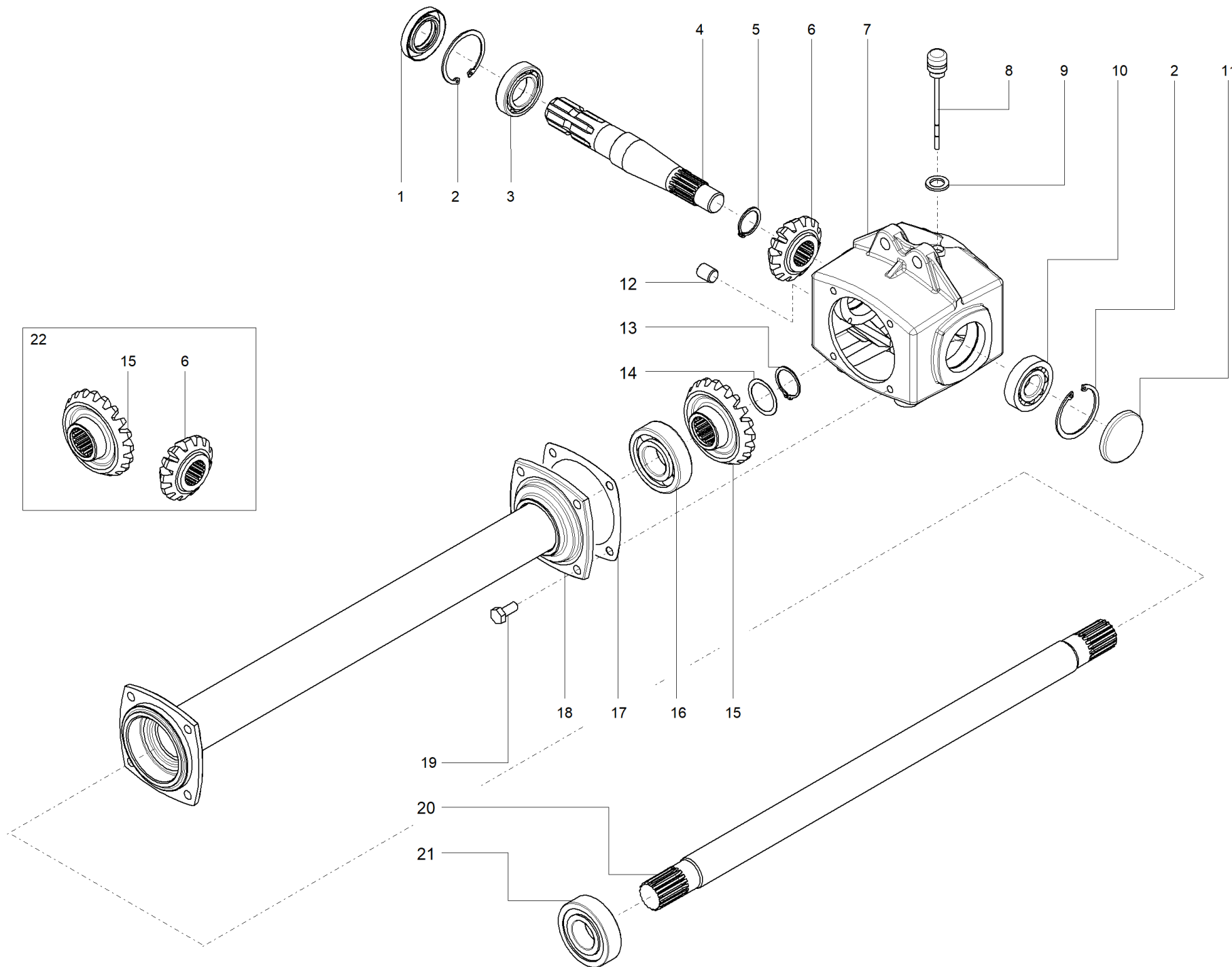
Model: ZLL

Revision: 05_03/03/2019 ->

Group: SIDE TRANSMISSION

Table: 02

Reference	P/N	Description	Model #	Quantity
1	3021108016	Screw UNI5739 8.8 M8x16 galvanised (coarse pitch)		5
2	3625000012	Grower washer DIN1751 C70 Øi12		5
3	4131290	ZLL/FJD coupling protection		1
4	4131291	ZLL/FJD coupling protection support		1
5	3021110020	Screw UNI5739 8.8 M10x20 galvanised (coarse pitch)		4
6	8874015	Unit EZ65 L400 ZLL080	ZLL/080	1
6	8874016	Unit EZ65 L450 ZLL090	ZLL/090	1
6	8874017	Unit EZ65 L500 ZLL100	ZLL/100	1
6	8874018	Unit EZ65 L550 ZLL110	ZLL/110	1
6	8874019	ZLL120 EZ65 1.46 L600 gearbox	ZLL/120	1
6	8874020	Unit EZ65 L650 ZLL130	ZLL/130	1
6	8874021	Unit EZ65 L700 ZLL140	ZLL/140	1
6	8874022	Unit EZ65 L750 ZLL150	ZLL/150	1
6	8874025	Unit EZ65 L400 ZLL080 (anti-clockwise)	ZLL/080	1
6	8874026	Unit EZ65 L450 ZLL090 (anti-clockwise)	ZLL/090	1
6	8874027	Unit EZ65 L500 ZLL100 (anti-clockwise)	ZLL/100	1
6	8874028	Unit EZ65 L550 ZLL110 (anti-clockwise)	ZLL/110	1
6	8874029	Unit EZ65 L600 ZLL120 (anti-clockwise)	ZLL/120	1
6	8874030	Unit EZ65 L650 ZLL130 (anti-clockwise)	ZLL/130	1
6	8874031	Unit EZ65 L700 ZLL140 (anti-clockwise)	ZLL/140	1
6	8874032	Unit EZ65 L750 ZLL150 (anti-clockwise)	ZLL/150	1
7	4781265	ZLL EZ65 crown shaft support seal		1
8	6700025	ASA80 chain 40 rollers		1
9	4001275	ZLL/SB chain skid		1
10	4211263	ZLL/SA/SB shock absorber spring		1
11	4781264	ZLL/SB transmission lid seal		1
12	4111200	ZLL/SB anonymous transmission crankcase		1
13	3444114	M14x1.5 conical porthole cap without washer		1
14	3464101008	UNI7473 (coarse pitch) M8 zinc plated nut		16
15	6800018	O-ring 116 18.72x2,62		1
16	3442022	M22x1.5 valve cap		1
17	3514201035	M35x1.5 heavy self-locking ring galvanised		1
18	4701221	ASA80 Z11 SB/ZLL duct toothed wheel		1
19	6320035	Elastic ring Ø35 UNI7435 DIN471		1
20	6013510	35x47x1 shim		1
21	4701359	ASA80 Z11 SB/ZLL driver toothed wheel		1
22	3021108020	Screw UNI5739 8.8 M8x20 galvanised (coarse pitch)		16
23	3414101012	UNI5587 M12 (coarse pitch) zinc plated nut		4
24	3625100012	Grower washer DIN1751 C70 Øi12 zinc plated		4
25	3021112030	Screw UNI5739 8.8 M12x30 galvanised (coarse pitch)		4
26	3021112025	Screw UNI5739 8.8 M12x25 galvanised (coarse pitch)		2
27	4131233	ZLL-JD group fastening plate		1



Machine type: TILLER

Document ID: 902874008

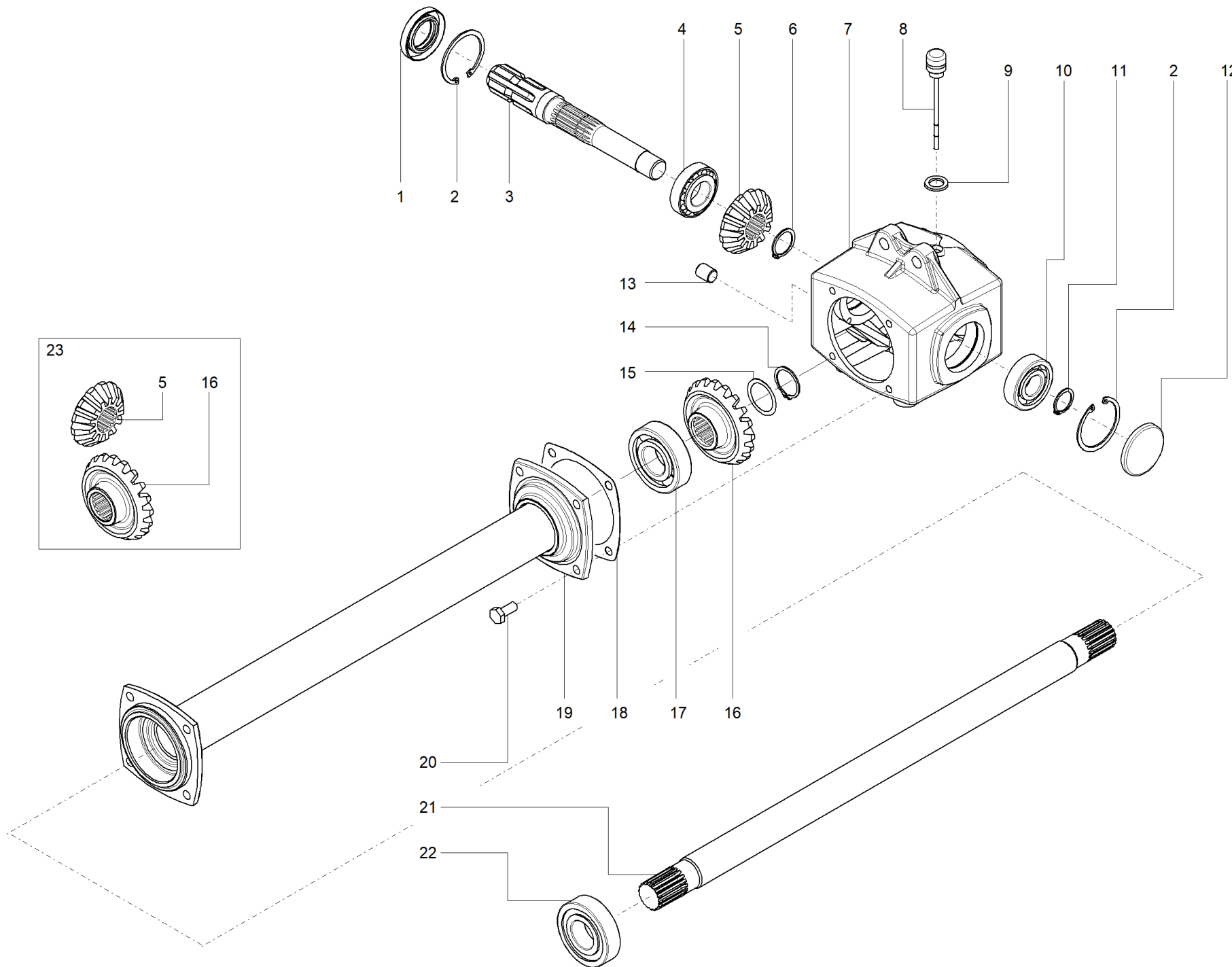
Model: ZLL

Revision: 05_03/03/2019 ->

Group: GEARBOX (CLOCKWISE ROTATION)

Table: 03

Reference	P/N	Description	Model #	Quantity
1	6203562	Oil seal 35x62x10 PP DIN3760, AS type		1
2	6310062	Elastic ring Ø62 UNI7437 DIN472		2
3	2106007	6007 bearing		1
4	4211212	EZ65 FK input shaft		1
5	6320030	Seeger DIN472 JM30		1
6	17265-00	Z13 EZ65 ZLL conical sprocket		1
7	16565-00	EZ65 bevel gear crankcase		1
8	65316-05	Cap + level M16 L=111		1
9	6470116	Washer M16 (Al/Cu)		1
10	2730305	30305 bearing		1
11	6100062	Locking screw cap, Ø62 H=7		1
12	6481600	M16 discharge cap		1
13	6320035	Elastic ring Ø35 UNI7435 DIN471		1
14	6013505	35x47x0.5 shim		1
15	17265-01	Z19 EZ65 ZLL conical crown		1
16	2226307	6307 2RS bearing		1
17	4781265	ZLL EZ65 crown shaft support seal		1
18	4001280	EZ65/400 ZLL080 extension	ZLL/080	1
18	4001281	EZ65/450 ZLL090/120 offset	ZLL/090	1
18	4001282	EZ65/500 ZLL100 extension	ZLL/100	1
18	4001283	EZ65/550 ZLL110 extension	ZLL/110	1
18	4001284	EZ65/600 ZLL120 FK48 extension	ZLL/120	1
18	4001285	EZ65/650 ZLL130 extension	ZLL/130	1
18	4001286	EZ65/700 ZLL140 extension	ZLL/140	1
18	4001287	EZ65/750 ZLL150 FK60 extension	ZLL/150	1
19	3021110025	Screw UNI5739 8.8 M10x25 galvanised (coarse pitch)		4
20	4211201	ZLL080 EZ65/400 crown shaft	ZLL/090	1
20	4211202	ZLL090 EZ65/450 crown shaft	ZLL/100	1
20	4211203	ZLL100 EZ65/500 crown shaft	ZLL/110	1
20	4211204	ZLL110 EZ65/550 crown shaft	ZLL/120	1
20	4211205	ZLL120/FK48 EX65/600 crown shaft	ZLL/130	1
20	4211206	ZLL130 EZ65/650 crown shaft	ZLL/140	1
20	4211207	ZLL140 EZ65/700 crown shaft	ZLL/150	1
20	4211208	ZLL150/FK60 EZ65/750 crown shaft		1
21	2106307	6307 bearing		1
22	8874040	EZ65 bevel gear kit R.1:1.5		1



Machine type: TILLER

Document ID: 902874008

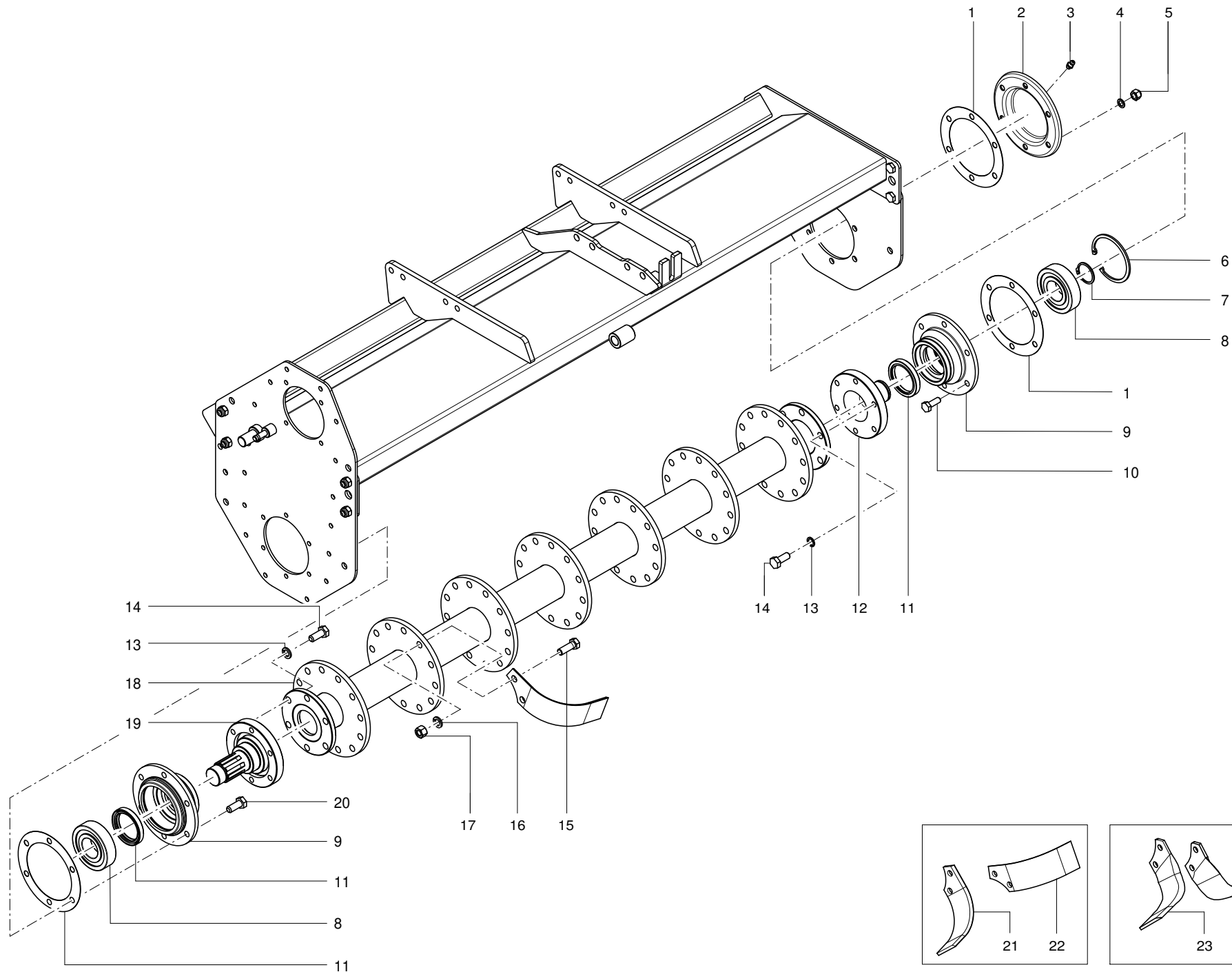
Model: ZLL

Revision: 05_03/03/2019 ->

Group: GEARBOX (COUNTERCLOCKWISE ROTATION)

Table: 04

Reference	P/N	Description	Model #	Quantity
1	6203562	Oil seal 35x62x10 PP DIN3760, AS type		1
2	6310062	Elastic ring Ø62 UNI7437 DIN472		2
3	4211213	EZ65 input shaft left rotation		1
4	2730206	30206 bearing		1
5	17265-00	Z13 EZ65 ZLL conical sprocket		1
6	6320030	Seeger DIN472 JM30		1
7	16565-00	EZ65 bevel gear crankcase		1
8	65316-05	Cap + level M16 L=111		1
9	6470116	Washer M16 (Al/Cu)		1
10	2106305	6305 bearing		1
11	6320025	Elastic ring Ø25 UNI7435 DIN471		1
12	6100062	Locking screw cap, Ø62 H=7		1
13	6481600	M16 discharge cap		1
14	6320035	Elastic ring Ø35 UNI7435 DIN471		1
15	6013505	35x47x0.5 shim		1
16	17265-01	Z19 EZ65 ZLL conical crown		1
17	2226307	6307 2RS bearing		1
18	4781265	ZLL EZ65 crown shaft support seal		1
19	4001280	EZ65/400 ZLL080 extension	ZLL/080	1
19	4001281	EZ65/450 ZLL090/120 offset	ZLL/090	1
19	4001282	EZ65/500 ZLL100 extension	ZLL/100	1
19	4001283	EZ65/550 ZLL110 extension	ZLL/110	1
19	4001284	EZ65/600 ZLL120 FK48 extension	ZLL/120	1
19	4001285	EZ65/650 ZLL130 extension	ZLL/130	1
19	4001286	EZ65/700 ZLL140 extension	ZLL/140	1
19	4001287	EZ65/750 ZLL150 FK60 extension	ZLL/150	1
20	3021110025	Screw UNI5739 8.8 M10x25 galvanised (coarse pitch)		4
21	4211201	ZLL080 EZ65/400 crown shaft	ZLL/080	1
21	4211202	ZLL090 EZ65/450 crown shaft	ZLL/090	1
21	4211203	ZLL100 EZ65/500 crown shaft	ZLL/100	1
21	4211204	ZLL110 EZ65/550 crown shaft	ZLL/110	1
21	4211205	ZLL120/FK48 EX65/600 crown shaft	ZLL/120	1
21	4211206	ZLL130 EZ65/650 crown shaft	ZLL/130	1
21	4211207	ZLL140 EZ65/700 crown shaft	ZLL/140	1
21	4211208	ZLL150/FK60 EZ65/750 crown shaft	ZLL/150	1
22	2226307	6307 2RS bearing		1
23	2106307	6307 bearing		1



Machine type: TILLER

Document ID: 902874008

Model: ZLL

Revision: 05_03/03/2019 ->

Group: ROTOR AND TOOLS

Table: 05

Reference	P/N	Description	Model #	Quantity
1	4788744	Transmission side support seal		3
2	4141242	ZLL/SB/FLB external support lid		1
3	6560008	Type-A greaser UNI7663 M8x1.25		1
4	3625000010	Grower washer DIN1751 C70 Øi10		6
5	3414101010	UNI5587 M10 (coarse pitch) zinc plated nut		6
6	6310090	Elastic ring Ø90 UNI7437 DIN472		1
7	6320040	Elastic ring Ø40 UNI7435 DIN471		1
8	2106308	6308 bearing		2
9	4701202	ZLL/SB/FLB rotor support		2
10	3021110030	Screw UNI5739 8.8 M10x30 galvanised (coarse pitch)		6
11	6205572	Oil seal 55x72x10 PP DIN3760, AS type		2
12	4701203	ZLL/SB/FLB external side hub		1
13	3645200012	Schnorr washer Cl.10 Ø12 galvanized		12
14	3022112030	Screw UNI5739 10.9 M12x30 galvanised (coarse pitch)		12
15	3131112035	Tines screw M12x35 8.8 fil.18 galvanised (fine pit	ZLL/080•090 (4 zappe)	32
15	3131112035	Tines screw M12x35 8.8 fil.18 galvanised (fine pit	ZLL/100•110 (4 zappe)	40
15	3131112035	Tines screw M12x35 8.8 fil.18 galvanised (fine pit	ZLL/120•130 (4 zappe)	48
15	3131112035	Tines screw M12x35 8.8 fil.18 galvanised (fine pit	ZLL/140•150 (4 zappe)	56
15	3131112035	Tines screw M12x35 8.8 fil.18 galvanised (fine pit	ZLL/080•090 (6 zappe)	48
15	3131112035	Tines screw M12x35 8.8 fil.18 galvanised (fine pit	ZLL/100•110 (6 zappe)	60
15	3131112035	Tines screw M12x35 8.8 fil.18 galvanised (fine pit	ZLL/120•130 (6 zappe)	72
15	3131112035	Tines screw M12x35 8.8 fil.18 galvanised (fine pit	ZLL/140•150 (6 zappe)	84
16	3635100012	Grower washer Fiat 10188 C70 Øi12 zinc plated	ZLL/080•090 (4 zappe)	16
16	3635100012	Grower washer Fiat 10188 C70 Øi12 zinc plated	ZLL/100•110 (4 zappe)	20
16	3635100012	Grower washer Fiat 10188 C70 Øi12 zinc plated	ZLL/120•130 (4 zappe)	24
16	3635100012	Grower washer Fiat 10188 C70 Øi12 zinc plated	ZLL/140•150 (4 zappe)	28
16	3635100012	Grower washer Fiat 10188 C70 Øi12 zinc plated	ZLL/080•090 (6 zappe)	24
16	3635100012	Grower washer Fiat 10188 C70 Øi12 zinc plated	ZLL/100•110 (6 zappe)	30
16	3635100012	Grower washer Fiat 10188 C70 Øi12 zinc plated	ZLL/120•130 (6 zappe)	36
16	3635100012	Grower washer Fiat 10188 C70 Øi12 zinc plated	ZLL/140•150 (6 zappe)	42
17	3414102012	UNI5587 M12x1,25 (fine pitch) zinc plated nut	ZLL/080•090 (4 zappe)	32
17	3414102012	UNI5587 M12x1,25 (fine pitch) zinc plated nut	ZLL/100•110 (4 zappe)	40
17	3414102012	UNI5587 M12x1,25 (fine pitch) zinc plated nut	ZLL/120•130 (4 zappe)	48
17	3414102012	UNI5587 M12x1,25 (fine pitch) zinc plated nut	ZLL/140•150 (4 zappe)	56
17	3414102012	UNI5587 M12x1,25 (fine pitch) zinc plated nut	ZLL/080•090 (6 zappe)	48
17	3414102012	UNI5587 M12x1,25 (fine pitch) zinc plated nut	ZLL/100•110 (6 zappe)	60
17	3414102012	UNI5587 M12x1,25 (fine pitch) zinc plated nut	ZLL/120•130 (6 zappe)	72
17	3414102012	UNI5587 M12x1,25 (fine pitch) zinc plated nut	ZLL/140•150 (6 zappe)	84
18	4011236	Rotor ZLL080	ZLL/080	1
18	4011274	Rotor ZLL090	ZLL/090	1
18	4011239	SB/ZLL120 rotor	ZLL/120	1
18	4011240	SB/ZLL130 rotor	ZLL/130	1
18	4011241	SB/ZLL140 rotor	ZLL/140	1
18	4011242	ZLL150 rotor	ZLL/150	1
18	4011237	SB/ZLL100 rotor	ZLL/100	1
18	4011238	SB/ZLL110 rotor	ZLL/110	1
19	4721201	ZLL/SB/FLB transmission side hub		1
20	3021110020	Screw UNI5739 8.8 M10x20 galvanised (coarse pitch)		6
21	4811286S	FK/SB/ZLL curved hoe (6 hoes/flange, in 10x box)	ZLL/080•090 (4 zappe)	1
21	4811286S	FK/SB/ZLL curved hoe (6 hoes/flange, in 10x box)	ZLL/100•110 (4 zappe)	1
21	4811286S	FK/SB/ZLL curved hoe (6 hoes/flange, in 10x box)	ZLL/120•130 (4 zappe)	1
21	4811286S	FK/SB/ZLL curved hoe (6 hoes/flange, in 10x box)	ZLL/140•150 (4 zappe)	1
21	4811286S	FK/SB/ZLL curved hoe (6 hoes/flange, in 10x box)	ZLL/080•090 (6 zappe)	1
21	4811286S	FK/SB/ZLL curved hoe (6 hoes/flange, in 10x box)	ZLL/100•110 (6 zappe)	1
21	4811286S	FK/SB/ZLL curved hoe (6 hoes/flange, in 10x box)	ZLL/120•130 (6 zappe)	1
21	4811286S	FK/SB/ZLL curved hoe (6 hoes/flange, in 10x box)	ZLL/140•150 (6 zappe)	1
22	4811285S	FK/SB/ZLL curved hoe (6 hoes/flange, in 10x box)	ZLL/080•090 (4 zappe)	1
22	4811285S	FK/SB/ZLL curved hoe (6 hoes/flange, in 10x box)	ZLL/100•110 (4 zappe)	1
22	4811285S	FK/SB/ZLL curved hoe (6 hoes/flange, in 10x box)	ZLL/120•130 (4 zappe)	1
22	4811285S	FK/SB/ZLL curved hoe (6 hoes/flange, in 10x box)	ZLL/140•150 (4 zappe)	1

Machine type: TILLER

Model: ZLL

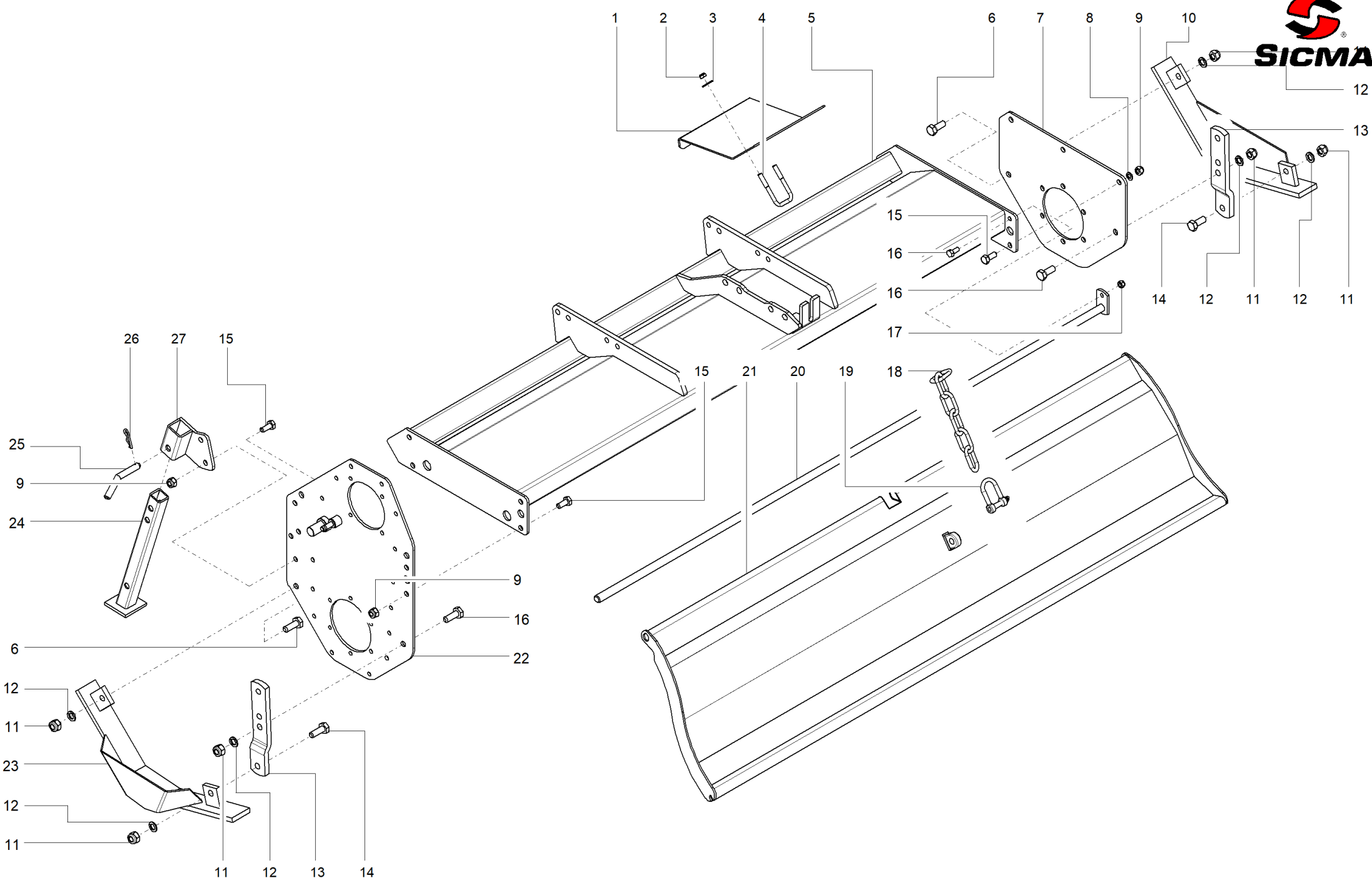
Group: ROTOR AND TOOLS

Document ID: 902874008

Revision: 05_03/03/2019 ->

Table: 05

Reference	P/N	Description	Model #	Quantity
22	4811285S	FK/SB/ZLL curved hoe (6 hoes/flange, in 10x box)	ZLL/080•090 (6 zappe)	1
22	4811285S	FK/SB/ZLL curved hoe (6 hoes/flange, in 10x box)	ZLL/100•110 (6 zappe)	1
22	4811285S	FK/SB/ZLL curved hoe (6 hoes/flange, in 10x box)	ZLL/120•130 (6 zappe)	1
22	4811285S	FK/SB/ZLL curved hoe (6 hoes/flange, in 10x box)	ZLL/140•150 (6 zappe)	1
23	4811284	SB/ZLL/ZLS squared hoe	ZLL/080•090 (4 zappe)	8
23	4811284	SB/ZLL/ZLS squared hoe	ZLL/100•110 (4 zappe)	10
23	4811284	SB/ZLL/ZLS squared hoe	ZLL/120•130 (4 zappe)	12
23	4811284	SB/ZLL/ZLS squared hoe	ZLL/140•150 (4 zappe)	14
23	4811284	SB/ZLL/ZLS squared hoe	ZLL/080•090 (6 zappe)	12
23	4811284	SB/ZLL/ZLS squared hoe	ZLL/100•110 (6 zappe)	15
23	4811284	SB/ZLL/ZLS squared hoe	ZLL/120•130 (6 zappe)	18
23	4811284	SB/ZLL/ZLS squared hoe	ZLL/140•150 (6 zappe)	21
24	4811283	SB/ZLL/ZLS squared hoe	ZLL/080•090 (4 zappe)	8
24	4811283	SB/ZLL/ZLS squared hoe	ZLL/100•110 (4 zappe)	10
24	4811283	SB/ZLL/ZLS squared hoe	ZLL/120•130 (4 zappe)	12
24	4811283	SB/ZLL/ZLS squared hoe	ZLL/140•150 (4 zappe)	14
24	4811283	SB/ZLL/ZLS squared hoe	ZLL/080•090 (6 zappe)	12
24	4811283	SB/ZLL/ZLS squared hoe	ZLL/100•110 (6 zappe)	15
24	4811283	SB/ZLL/ZLS squared hoe	ZLL/120•130 (6 zappe)	18
24	4811283	SB/ZLL/ZLS squared hoe	ZLL/140•150 (6 zappe)	21



Machine type: TILLER

Document ID: 902874008

Model: ZLL

Revision: 05_03/03/2019 ->

Group: FRAME, GUARDS AND SUPPORTS

Table: 06

Reference	P/N	Description	Model #	Quantity
1	4132224	CE Guard	ZLL/080-090-100	2
1	4132225	CE Guard	ZLL/110-120	2
1	4132226	CE Guard	ZLL/130	2
1	4132228	CE Guard	ZLL/140	2
1	4132230	Front protection sheet L=250 panel 50-60	ZLL/150	2
2	3444101008	DIN980 self-locking M8 (coarse pitch) 8 zinc plated nut		8
3	3604100008	Flat washer UNI6592 140Hv Øi08 galvanised		8
4	4302002	50 CS/ZLL panel M8 tie		4
5	4001301	Frame	ZLL/080	1
5	4001302	Frame	ZLL/090	1
5	4001303	Frame	ZLL/100	1
5	4001304	Frame	ZLL/110	1
5	4001305	ZLL120 frame	ZLL/120	1
5	4001306	Frame	ZLL/130	1
5	4001307	Frame	ZLL/140	1
5	4001308	ZLL150 frame	ZLL/150	1
6	3021112035	Screw UNI5739 8.8 M12x35 galvanised (coarse pitch)		2
7	4131331	ZLL plate external side		1
8	3625000010	Grower washer DIN1751 C70 Øi10		7
9	3464101010	UNI7473 (coarse pitch) M10 zinc plated nut		9
10	4001389	CE ZLL/SB external side slide		1
11	3464101012	UNI7473 (coarse pitch) M12 zinc plated nut		6
12	3625000012	Grower washer DIN1751 C70 Øi12		6
13	4831202	ZLL slide regulating rod		2
14	3021112040	Screw UNI5739 8.8 M12x40 galvanised (coarse pitch)		2
15	3021110025	Screw UNI5739 8.8 M10x25 galvanised (coarse pitch)		8
16	3021112030	Screw UNI5739 8.8 M12x30 galvanised (coarse pitch)		2
17	3464101008	UNI7473 (coarse pitch) M8 zinc plated nut		1
18	4508702	SB/SA/ZLL usual lid chain 10 rollers		1
19	3680010	Ø10 mm zinc-plated shackle		1
20	4002336	SB/ZLL080 pivot	ZLL/080	1
20	4002337	SB/ZLL/ZLS090 pivot	ZLL/090	1
20	4002338	100/130 cm cutter pivot	ZLL/100	1
20	4002339	110/140 cm cutter pivot	ZLL/110	1
20	4002340	120 cm cutter pivot	ZLL/120	1
20	4002341	130 cm cutter pivot	ZLL/130	1
20	4002342	140 cm cutter pivot	ZLL/140	1
20	4002343	ZLL150 HSV/HSF180 pivot	ZLL/150	1
21	4001222	ZLL/SB080 lid	ZLL/080	1
21	4001223	ZLL/SB100 lid	ZLL/100	1
21	4001224	ZLL/SB110 lid	ZLL/110	1
21	4001225	ZLL/SB120 lid	ZLL/120	1
21	4001226	ZLL/SB130 lid	ZLL/130	1
21	4001227	ZLL/SB140 lid	ZLL/140	1
21	4001228	ZLL150 lid	ZLL/150	1
21	4001270	ZLL/SB090 lid	ZLL/090	1
22	4001312	ZLL transmission side plate		1
23	4001388	CE ZLL/SB transmission side slide		1
24	4001234	SB/CS/ZLL support foot		1
25	4236115	SA/SB/CS/ZLL/RM foot locking pin		1
26	6351003	Split pin Ad R Ø3 galvanised		1
27	4001682	SA/SB/CS/ZLL foot support		1