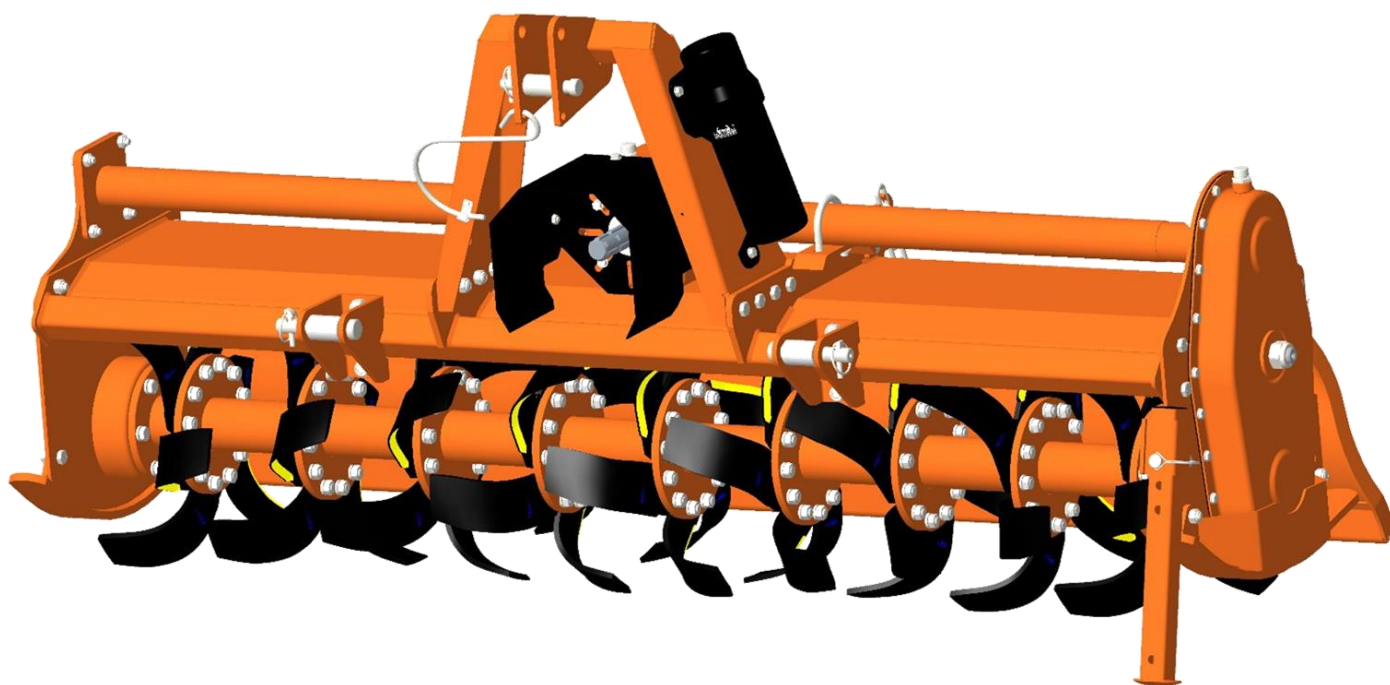


ROTARY TILLER U-M SERIES



PART'S MANUAL

Tirth Agro Technology Pvt. Ltd.

ISO 9001:2015 CE Certified Company

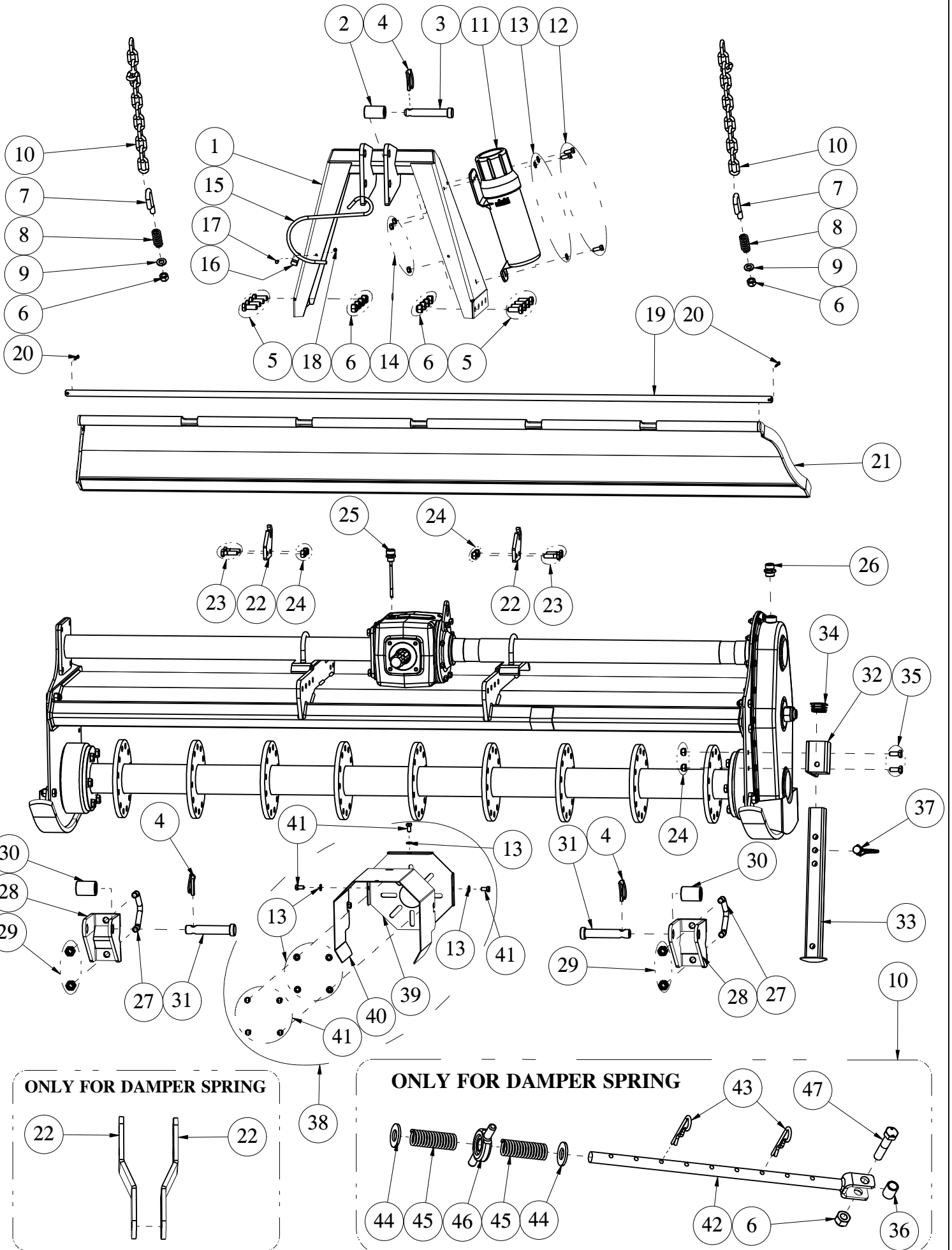
PM1122-31EN-AUG_21

INDEX



Page No.	Description	Revision Date
1.1	ACCESSORIES PARTS	PM1122-31EN-REV_000_AUG_21
1.2	ACCESSORIES PARTS	PM1122-31EN-REV_000_AUG_21
2.1	MACHINE PARTS (GEAR DRIVE)	PM1122-31EN-REV_000_AUG_21
2.2	MACHINE PARTS (GEAR DRIVE)	PM1122-31EN-REV_000_AUG_21
3.1	GEAR BOX PARTS	PM1122-31EN-REV_000_AUG_21
3.2	GEAR BOX PARTS	PM1122-31EN-REV_000_AUG_21
4.1	SIDE DRIVE PARTS	PM1122-31EN-REV_000_AUG_21
4.2	SIDE DRIVE PARTS	PM1122-31EN-REV_000_AUG_21
5.1	STUB AXLE PARTS	PM1122-31EN-REV_000_AUG_21
5.2	STUB AXLE PARTS	PM1122-31EN-REV_000_AUG_21
6.1	ROTOR PARTS	PM1122-31EN-REV_000_AUG_21
6.2	ROTOR PARTS	PM1122-31EN-REV_000_AUG_21
7.1	SHEAR BOLT PTO PARTS	PM1122-31EN-REV_000_AUG_21
7.2	SHEAR BOLT PTO PARTS	PM1122-31EN-REV_000_AUG_21
8.1	SLIP CLUTCH PTO PARTS	PM1122-31EN-REV_000_AUG_21
8.2	SLIP CLUTCH PTO PARTS	PM1122-31EN-REV_000_AUG_21

ACCESSORIES PARTS

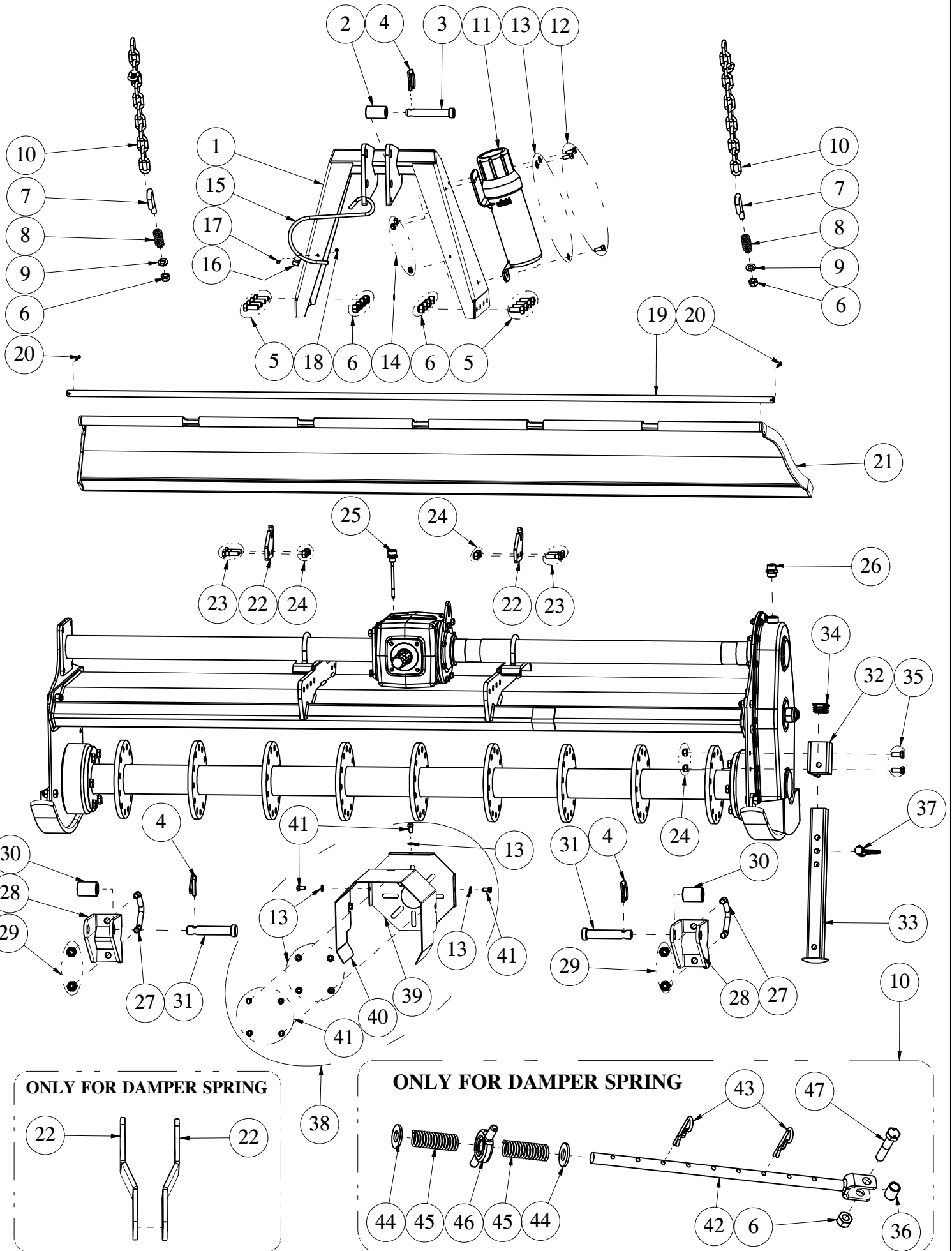


ACCESSORIES PARTS



Sr. No.	Part No.	Description	Qty.
1	14376	TOP MAST COMP.	1
2	14038	BUSH (DIA. 19.5 X 31.5 X 52 L)	1
3	1214	HINCH PIN TOP CAT-I (DIA- 19 X 126)	1
4	1218	LINCH PIN	3
5	17275	HEX BOLT M12X1.75X30(DIN933)(8.8)(ZP)	8
6	1209	NYLOCK NUT M12X1.75 (DIN-982)	11
7	14004	J-BOLT M12 x 1.75 x 24 x 87.5 x 25TL	2
8	14005	U-BOLT SPRING	2
9	8126	PLAIN WASHER 12MM (BS-4320)	2
10	14073	LIFTING CHAIN TB	2
	13126	DAMPER SPRING ROD ASSY	2
11	26030	MANUAL BOX COVER 1/2	1
12	8040	HEX BOLT M8X1.25X20(IS1364-2)(8.8)(ZP)	3
13	8064	PLAIN WASHER 8MM (BS-4320)	10
14	8181	HEX NUT M8X1.25(IS 1363)(8)(ZP)	3
15	14340	DRIVELINE HOOK 250MM	1
16	23147	PLATE,HOOK HOLDING	1
17	35098	HEX BOLT M4X0.75X15(IS1364-2)(8.8)(ZP)	1
18	24529	NYLOCK NUT M4 X 0.75 - SCH	1
19	14349	TRAILING BOARD ROD 1.35M	1
	14391	TRAILING BOARD ROD 1.42M	
	14241	TRAILING BOARD ROD 1.5M	
	14088	TRAILING BOARD ROD 1.8M	
20	19018	COTTER PIN (DIA 4 X 35)	2
21	14348	TRAILING BOARD COMP 1.35M	1
	14390	TRAILING BOARD COMP 1.42M	
	14247	TRAILING BOARD COMP 1.5M	
	14089	TRAILING BOARD COMP 1.8M	
22	11726	CHAIN LIFTING HOOK	2
	14400	BRACKET, DAMPER SPRING ASM.	4
23	3345	HEX BOLT M10X1.50X35(DIN931)(8.8)(ZP)	4
24	1298	NYLOCK NUT M10X1.50 (DIN-982)	6

ACCESSORIES PARTS

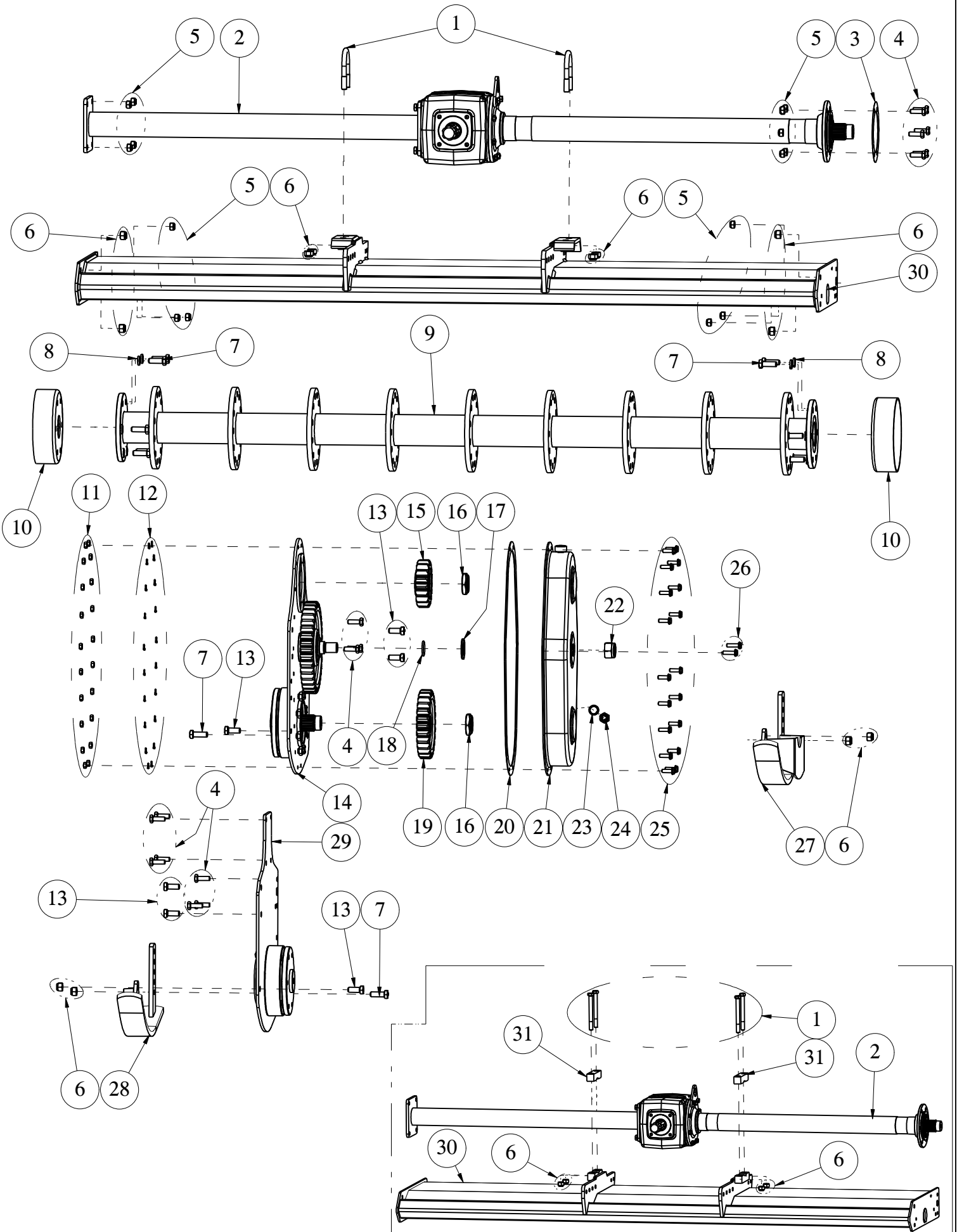


ACCESSORIES PARTS



Sr. No.	Part No.	Description	Qty.
25	14316	DIPSTICK 106MM (M16 X 1.5) (1MLSR202)	1
26	14310	AIR BREATHER 1/2" BSP (1GTSR38)	1
27	14424	V-BOLT M14X2X90X78X23 TL (8.8)	2
28	14373	HITCHING BRACKET COMP	2
29	1574	NYLOCK NUT M14X2.00 (DIN-982)	4
30	14016	BUSH (DIA. 36.5 X 22.5 X 50 L)	2
31	1216	HITCH PIN BOTTOM CAT-I (DIA-22 X 129)	2
32	14104	SIDE STAND OUTER COMP	1
33	14105	SIDE STAND INNER COMP	1
34	4657	SQ. PIPE PLASTIC CAP 40MM	1
35	17270	HEX BOLT M10X1.50X25(DIN933)(8.8)(ZP)	2
36	13115	TB DAMPER ROD BUSH	1
37	14267	SQ. SNAPPER PIN D10 X L70	1
38	1547	PTO SHAFT GUARD ASSEMBLY	1
39	1546	PTO SHAFT GUARD MOUNT PLATE COMP	1
40	17558	PTO SHAFT GUARD	1
41	8190	HEX BOLT M8X1.25X15(IS1364-2)(8.8)(ZP)	7
42	13113	DAMPER SPRING ROD COMP	1
43	15055	R-CLIP WIRE DIA 4.00MM	2
44	13114	DAMPER SPRING ROD WASHER	2
45	13144	DAMPER SPRING	2
46	1200	DAMPER SPRING COLLAR	1
47	15027	HEX BOLT M12X1.75X55(IS1364-1)(8.8)(ZP)	1

MACHINE PARTS (GEAR DRIVE)

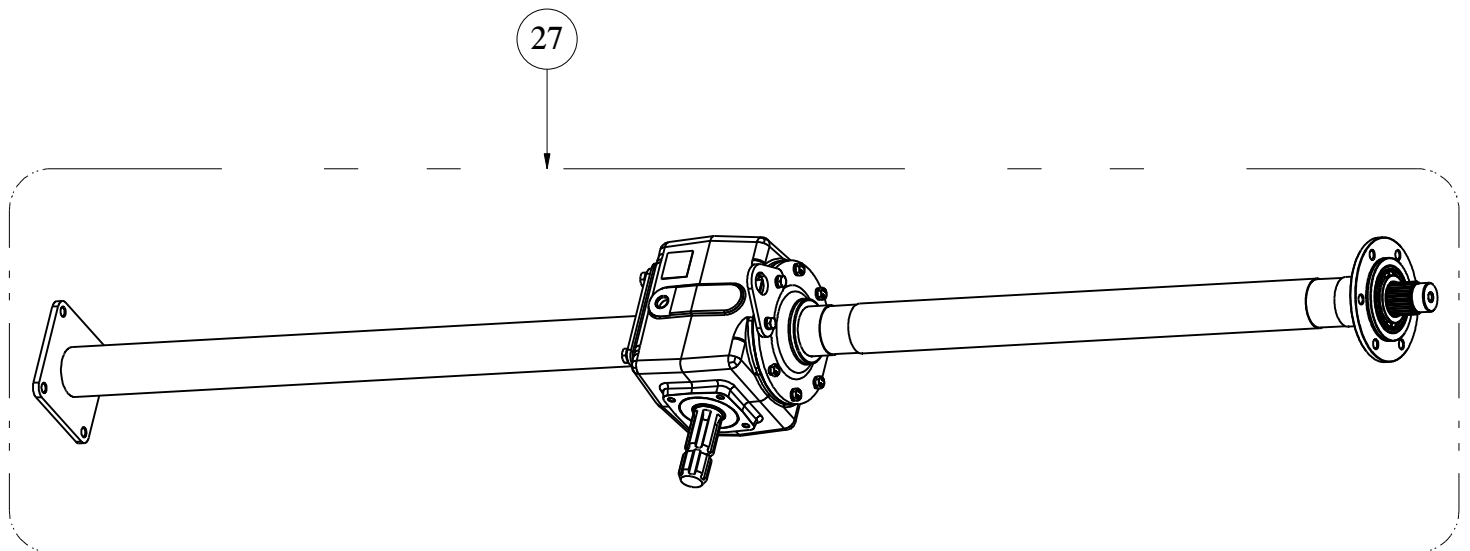
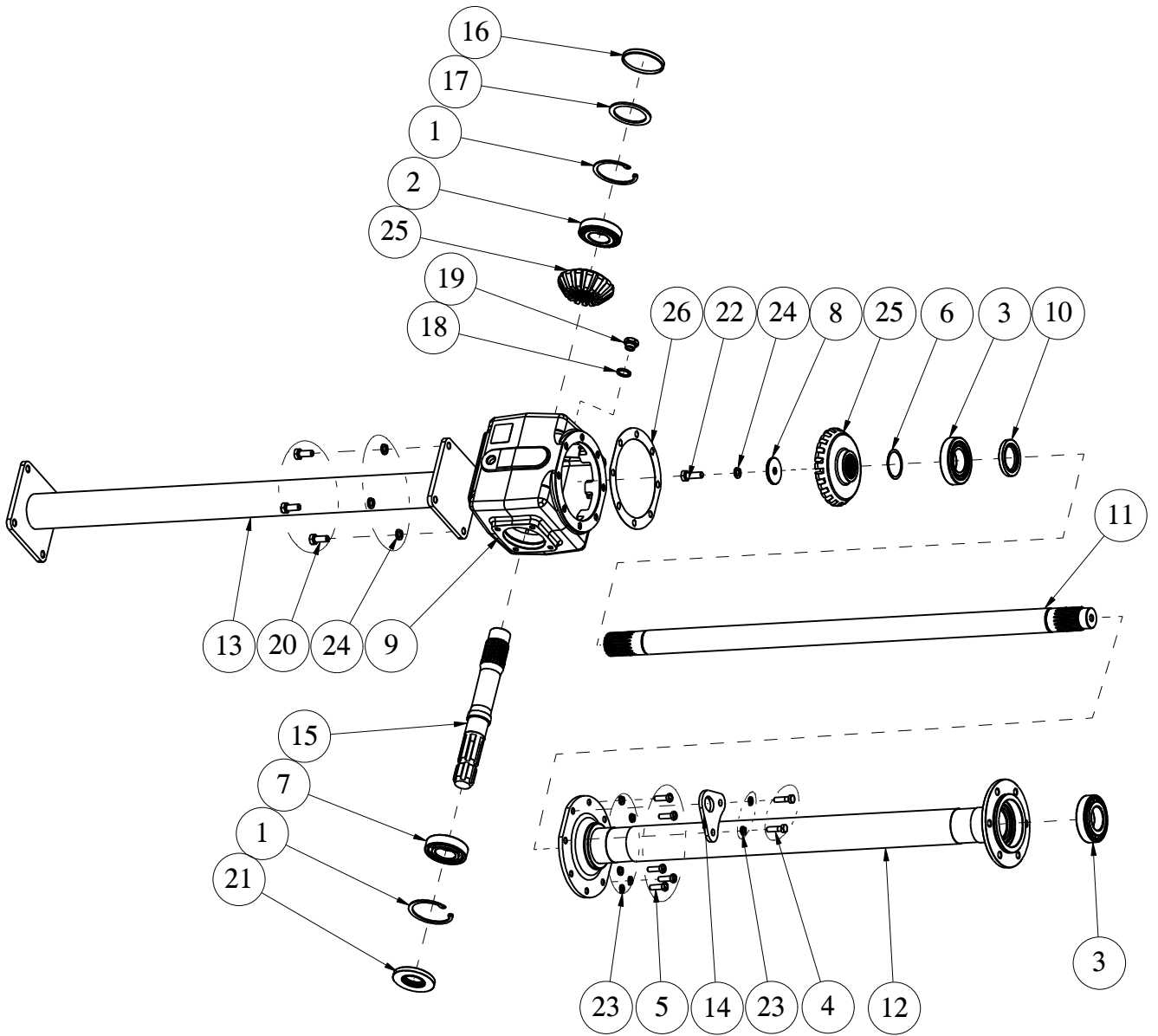


MACHINE PARTS (GEAR DRIVE)



Sr. No.	Part No.	Description	Qty.
1	14421	U-BOLT M12X1.75X73X99.5X32TL (8.8)	2
	10014	HEX BOLT M12X1.75X120(IS1364-1)(8.8)(ZP) (ONLY FOR DS)	4
2	-	SEE THE GEAR BOX PARTS PAGE	-
3	14430	HOUSING FLANGE SMALL GASKET 0.5 NA	1
4	3340	HEX BOLT M10X1.50X30(DIN933)(8.8)(ZP)	16
5	1298	NYLOCK NUT M10X1.50 (DIN-982)(8)(ZP)	16
6	1209	NYLOCK NUT M12X1.75 (DIN-982)(8)(ZP)	12
7	17274	HEX BOLT M12X1.75X35(DIN933)(8.8)(ZP)	14
8	14339	SPECIAL, 1/2"(ASME B 18.21.1)ZP	12
9	-	SEE THE ROTOR PARTS PAGE	1
10	14130	DUST COVER	2
11	8181	HEX NUT M8X1.25(IS 1363)(8)(ZP)	20
12	14360	SPRING WASHER M8.00(IS 3063)(ZP)	20
13	17275	HEX BOLT M12X1.75X30(DIN933)(8.8)(ZP)	6
14	14095	R D PLATE ASSEMBLY	1
15	14111	GEAR 17 TEETH	1
16	1449	NYLOCK NUT M35X1.50	2
17	14161	SPACER 30x50x4	1
18	14131	O RING 30 x 3.50	1
19	14110	GEAR 26 TEETH	1
20	14382	CHAIN COVER PAPER GASKET	1
21	14444	SIDE COVER GD COMP	1
22	14065	NYLOCK NUT M24X2.00 (DIN-982)	1
23	19007	DOWTY SEAL (3/8 BSP)	1
24	14314	OIL LEVEL GAUGE-3/8"BSP (1GTLA21O)	1
25	14441	FLANGE BOLT M8X1.25X25(DIN6921)(8.8)(ZP)	18
26	14442	FLANGE BOLT M8X1.25X30(DIN6921)(8.8)(ZP)	2
27	14091	DEPTH SKID COMP LH	1
28	14090	DEPTH SKID COMP RH	1
29	14101	S D PLATE ASSEMBLY	1
30	14342	HULL COMP 1.35M	1
	14384	HULL COMP 1.42M	
	101106265	WELD ASSEMBLY, HULL COMP UM-1.42M	
	14242	HULL COMP 1.5M	
	101106261	WELD ASSEMBLY, HULL COMP UM-1.5M	
	14080	HULL COMP 1.8M	
31	101106262	WELD ASSEMBLY, HULL COMP UM-1.8M	2
	10010	JACK SHAFT HOUSING CLAMP	

GEAR BOX PARTS

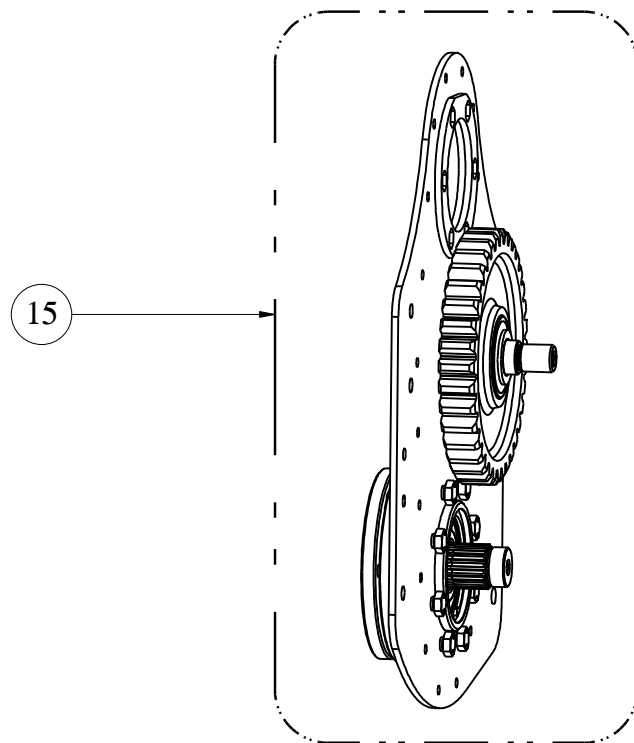
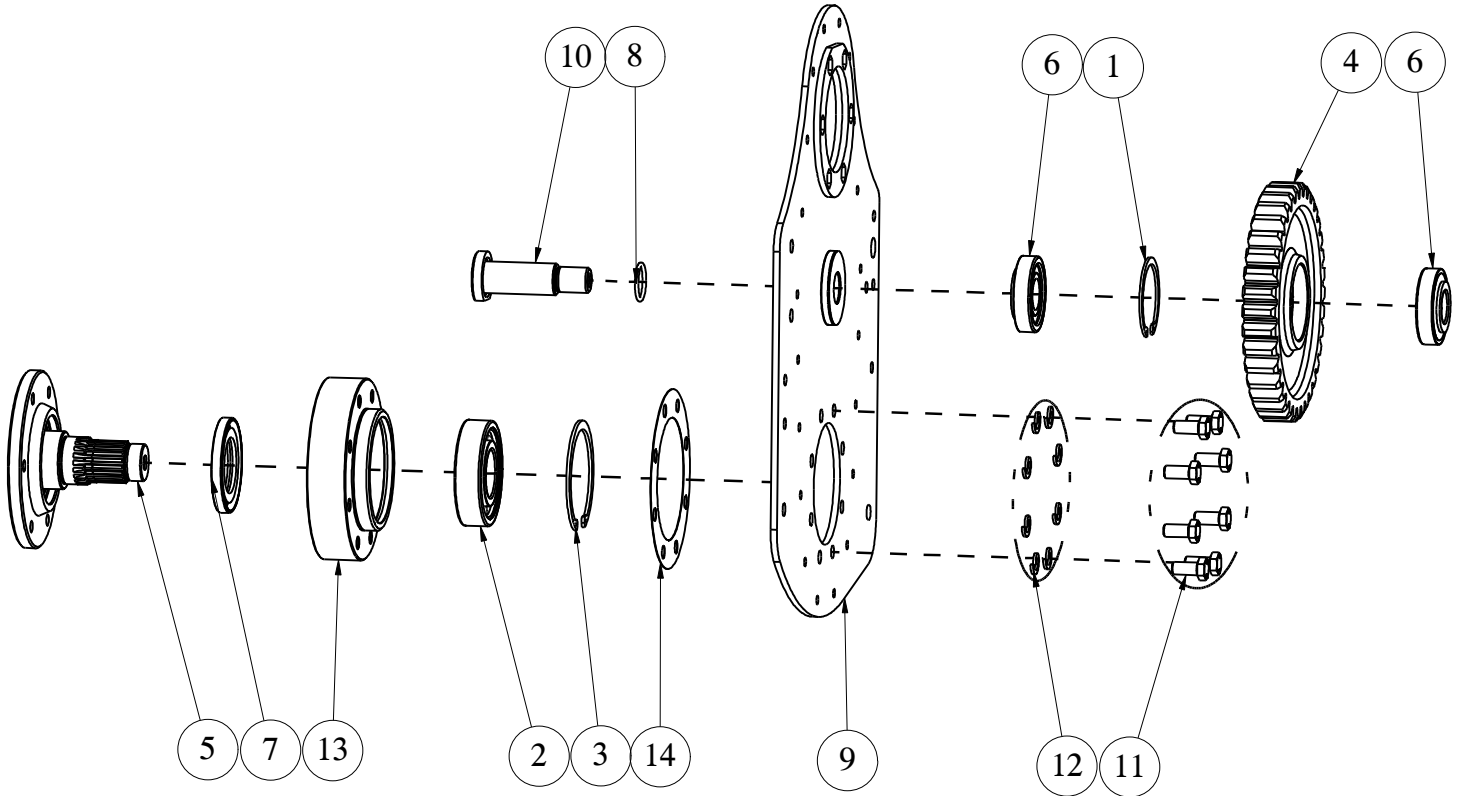


GEAR BOX PARTS



Sr. No.	Part No.	Description	Qty.
1	1002	CIRCLIP INTERNAL 72mm	2
2	1003	BEARING 30207	1
3	1022	BEARING 30208	2
4	6072	HEX BOLT M8X1.25X30(IS1364-2)(8.8)(ZP)	2
5	8171	HEX BOLT M8X1.25X25(IS1364-2)(8.8)(ZP)	6
6	1426	SHIM (DIA 50 X 42)(0.20MM)	1
7	10143	BEARING 6207	1
8	14049	CROWN WASHER	1
9	14118	GEAR BOX	1
10	14121	OIL SEAL 40 x 62 x 7	1
11	14345	JACK SHAFT 705MM	1
	14387	JACK SHAFT (TL-779)	
	14240	JACK SHAFT 848mm	
	14082	JACK SHAFT 946MM	
12	14343	J/S HSG. (J-705)(EL-589.5)	1
	14386	J/S HSG. (J-779) (EL-664)	
	14244	J/S HSG. (J-848)(EL-734.5)	
	14083	J/S HSG. (J-946)(EL-831)	
13	14084	FULL HSG. COMP (TL-833.5)	1
14	14085	GEAR BOX LIFTING HOOK	1
15	14106	INPUT SHAFT 540	1
16	14119	OIL SEAL 72 x 8	1
17	14120	SPACER 71.50 x 56 x 3	1
18	19007	DOWTY SEAL (3/8 BSP)	1
19	14312	DRAIN CAP 3/8" BSP (1GTC02UW)	1
20	17270	HEX BOLT M10X1.50X25(DIN933)(8.8)(ZP)	4
21	14309	OIL SEAL 35 X 72 X 8 (SPECIAL)	1
22	3340	HEX BOLT M10X1.50X30(DIN933)(8.8)(ZP)	1
23	14360	SPRING WASHER M8.00(IS 3063)(ZP)	8
24	14361	SPRING WASHER M10.00(IS 3063)(ZP)	5
25	14369	CROWN T22,PINION T15 PAIR	1
26	14429	HOUSING FLANGE BIG GASKET 0.4 CL	2
27	14346	GEAR BOX ASSEMBLY(1.35M/540)	1
	14389	GEAR BOX ASSEMBLY 1.42M	
	14243	GEAR BOX ASSEMBLY (1.5M/540)	
	14108	GEAR BOX ASSEMBLY (1.8M/540)	

SIDE DRIVE PARTS

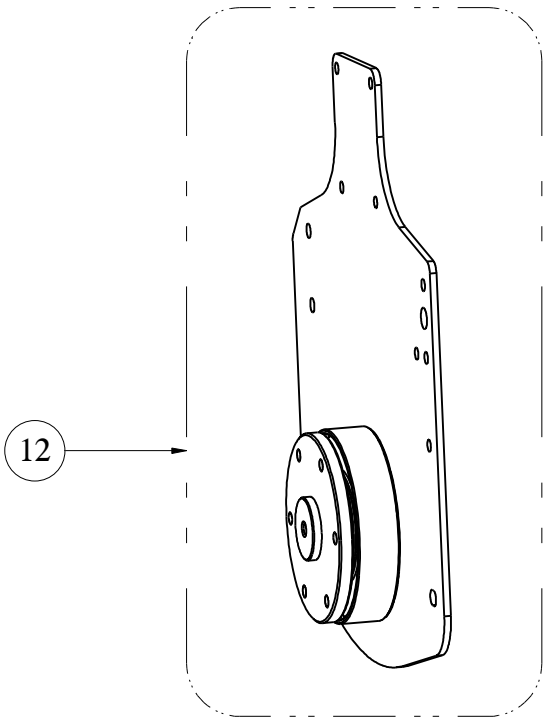
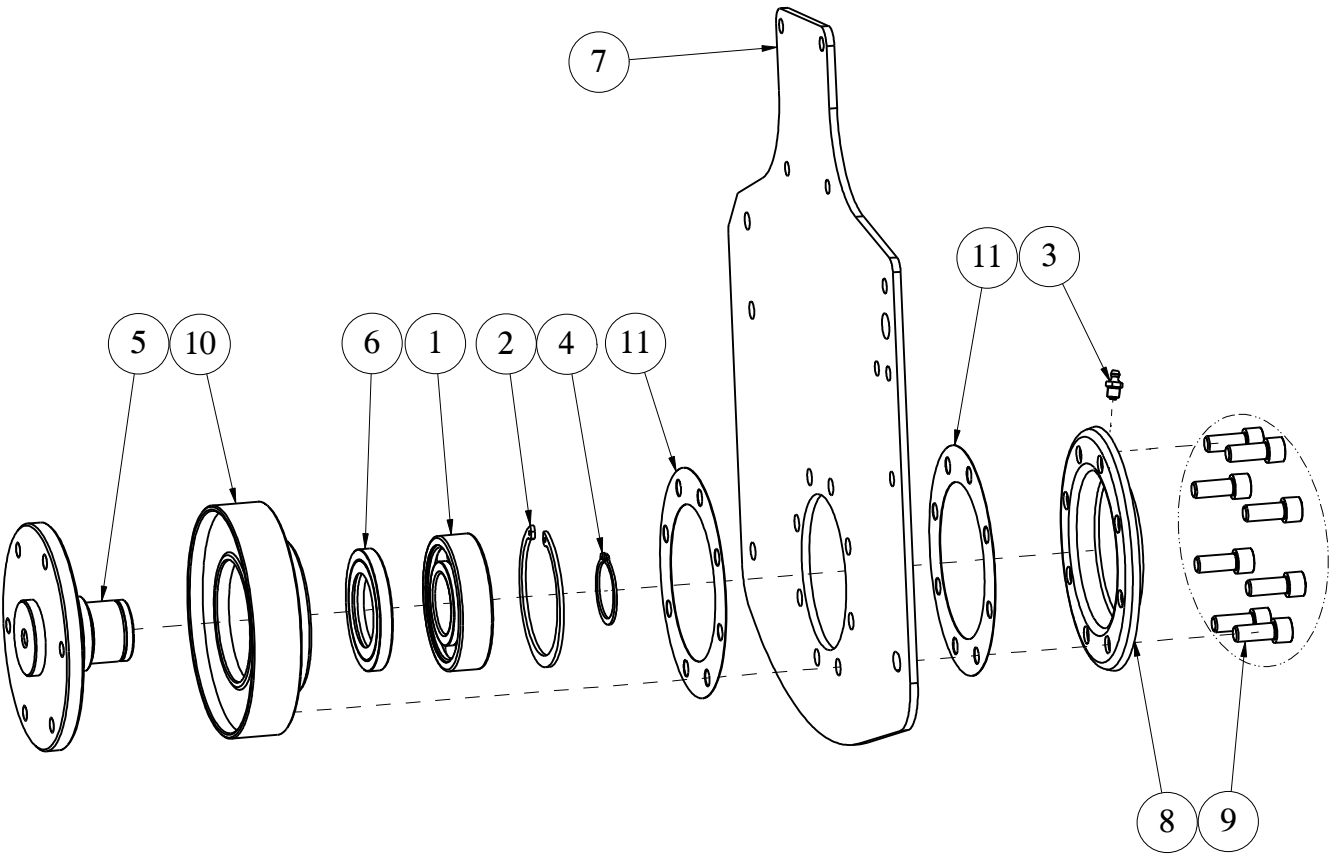


SIDE DRIVE PARTS



Sr. No.	Part No.	Description	Qty.
1	1002	CIRCLIP INTERNAL 72mm	1
2	1073	BEARING 6309 LU	1
3	1074	CIRCLIP INTERNAL 100MM	1
4	14109	GEAR 36 TEETH	1
5	14115	RD SHAFT GEAR SIDE	1
6	14127	BEARING 30306	2
7	14122	OIL SEAL 55 x 90 x 10	1
8	14131	O RING 30 x 3.50	1
9	14094	R D PLATE GD COMP	1
10	14096	R D SHAFT MIDDLE	1
11	17474	HEX BOLT M12X1.75X25(DIN933)(8.8)(ZP)	8
12	14362	SPRING WASHER M12.00(IS 3063)(ZP)	8
13	14439	ROTOR SHAFT HOUSING V1	1
14	14431	R D HOUSING GASKET 0.4 CL	1
15	14095	R D PLATE ASSEMBLY	1

STUB AXLE PARTS

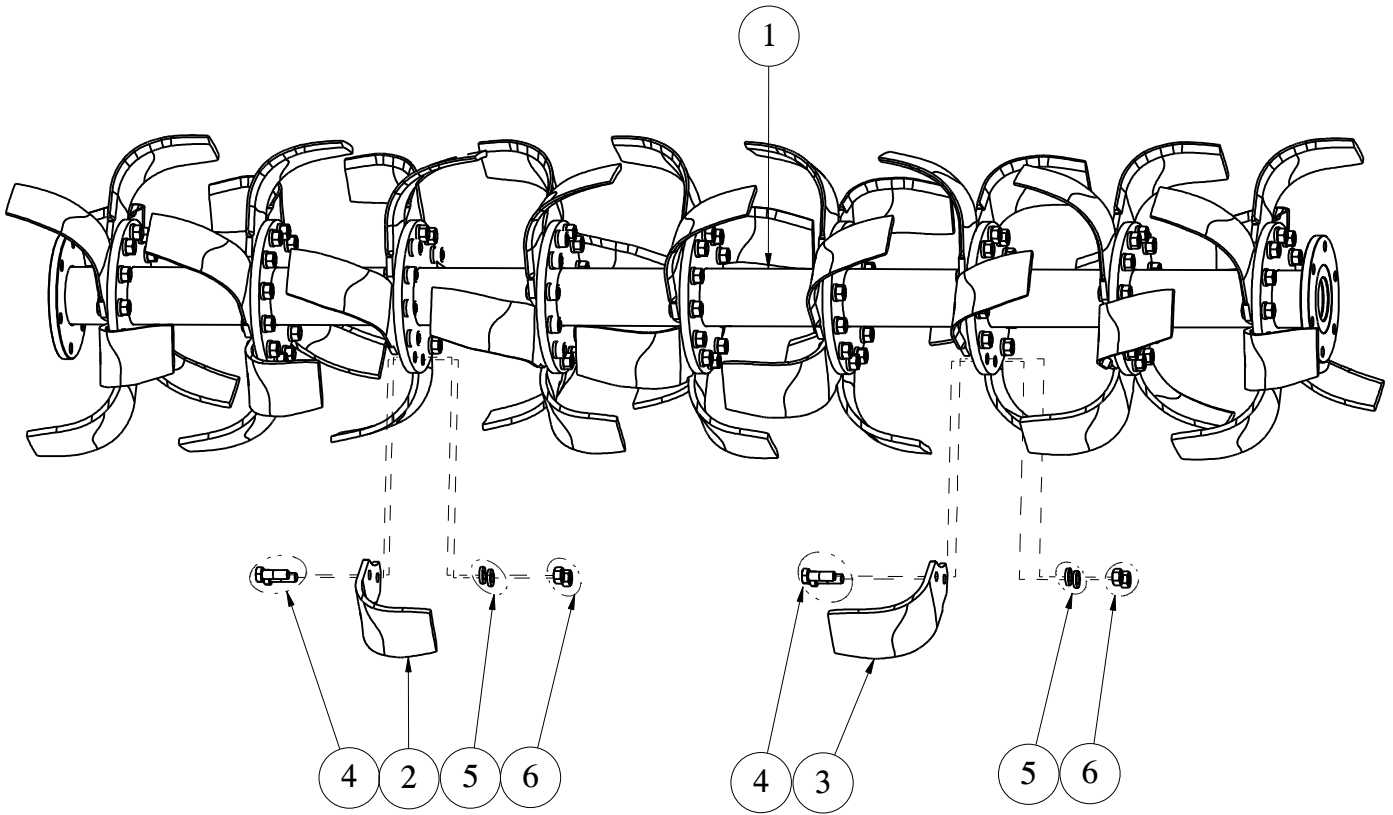


STUB AXLE PARTS

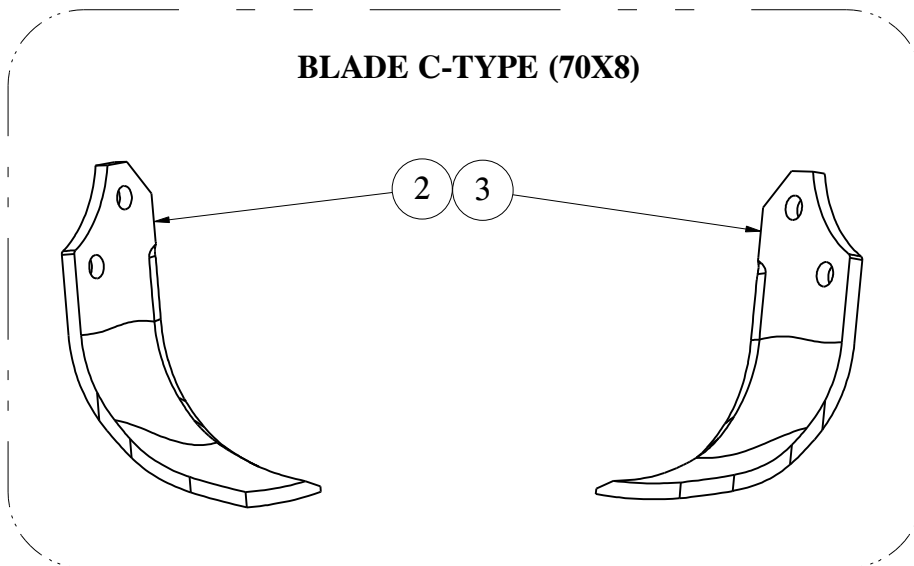


Sr. No.	Part No.	Description	Qty.
1	1073	BEARING 6309 LU	1
2	1074	CIRCLIP INTERNAL 100MM	1
3	1253	1/8 BSP GREASE NIPPLE 7.5MM	1
4	2089	CIRCLIP EXTERNAL 45MM	1
5	14117	STUB AXLE SHAFT SD SIDE	1
6	14122	OIL SEAL 55 x 90 x 10	1
7	14100	S D PLATE	1
8	14102	STUB AXLE END COVER COMP	1
9	14367	ALLEN BOLT M12X1.75X30-FT12.9DIN912-ZINC	8
10	14439	ROTOR SHAFT HOUSING V1	1
11	14431	R D HOUSING GASKET 0.4 CL	2
12	14101	S D PLATE ASSEMBLY	1

ROTOR BLADE C-TYPE (70X8)



BLADE C-TYPE (70X8)

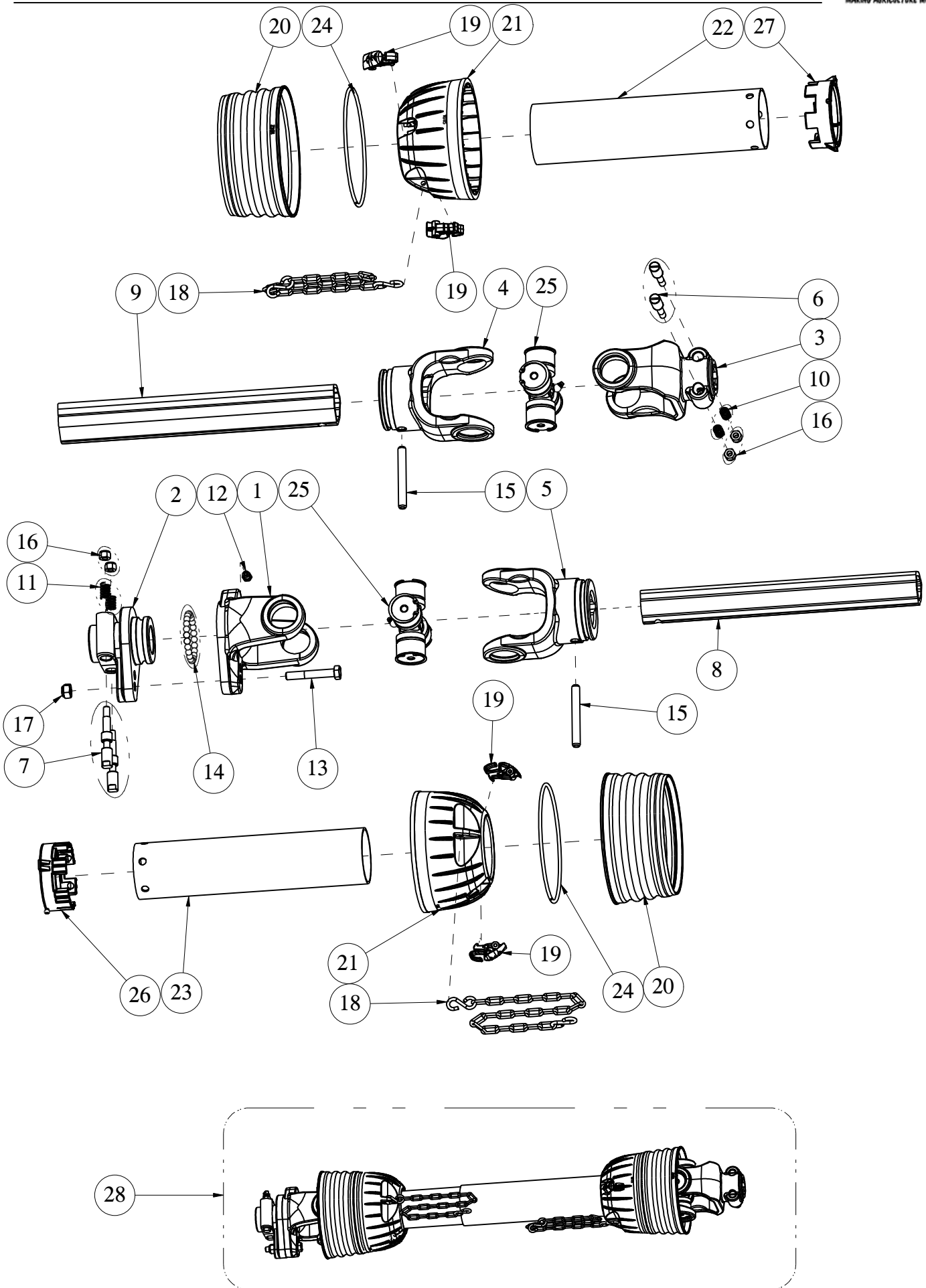


ROTOR PARTS



Sr. No.	Part No.	Description	Qty.
1	14347	ROTOR COMP 1.35M	1
	14385	ROTOR COMP 1.42M	
	14246	ROTOR COMP 1.5M	
	14403	ROTOR COMP 1.8M (10-CD)	
	14092	ROTOR COMP 1.8M	
2	1677	BLADE C - TYPE RH (70X8)	AS REQ.
3	1676	BLADE C - TYPE LH (70X8)	AS REQ.
4	4822	HEX BOLT M12 X 1.25 X 35(HT-10.9)DIN 960	AS REQ.
5	14336	HEX NUT M12X1.25(DIN 934)(10)(ZP)	AS REQ.
6	14339	SPRING WASHER 1/2"(ASME B 18.21.1)	AS REQ.

SHEAR BOLT PTO PARTS

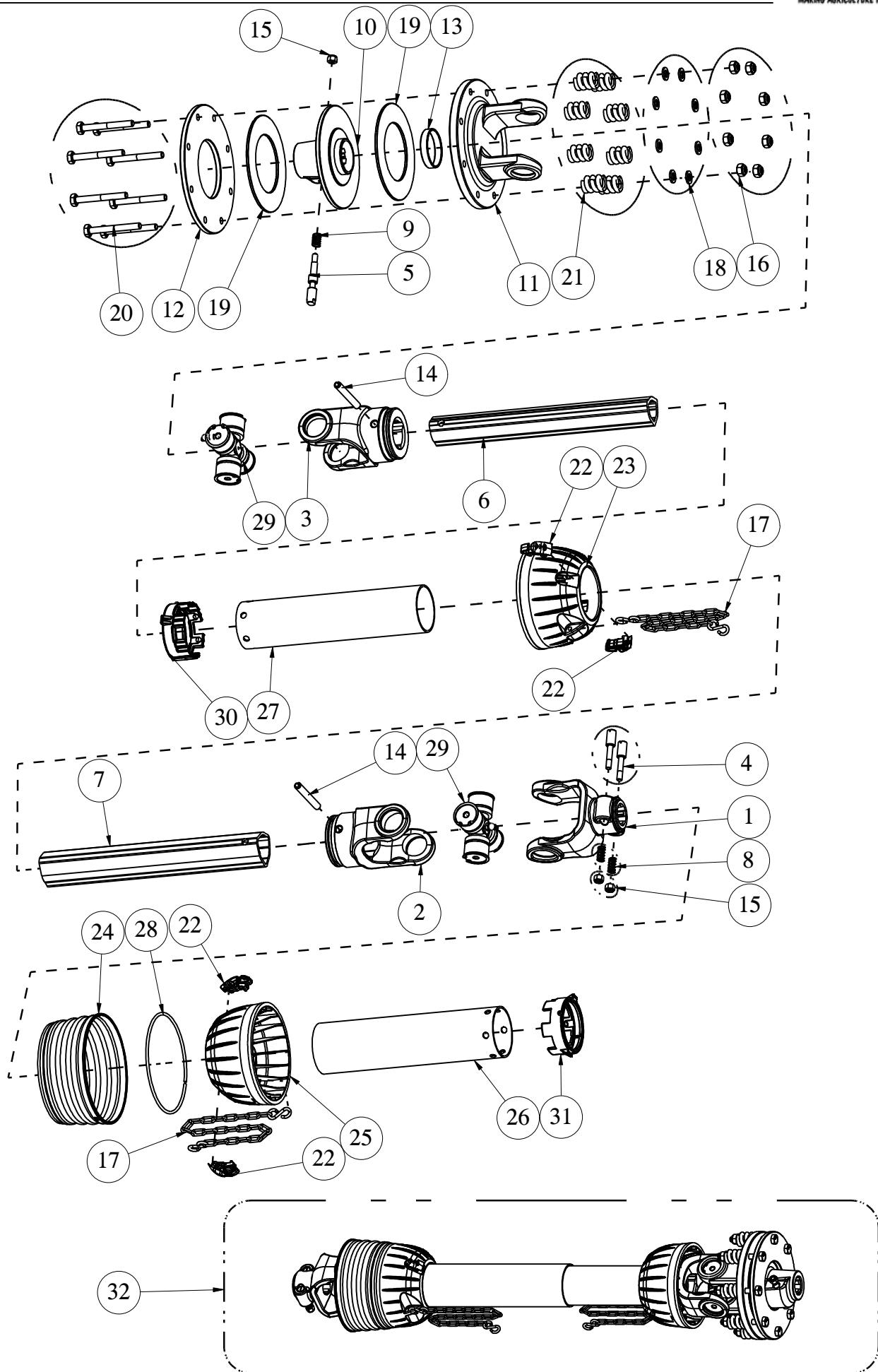


SHEAR BOLT PTO PARTS



Sr. No.	Part No.	Description	Qty.
1	1252	SHEAR BOLT YOKE	1
2	1255	DOUBLE PIN HUB	1
3	1234	PLAIN YOKE 6-SPLINE	1
4	1245	OUTER TUBE YOKE	1
5	1249	INNER TUBE YOKE	1
6	1257	PUSH PIN SMALL	2
7	1259	PUSH PIN BIG	2
8	1247	INNER TUBE 14.5"	1
9	1246	OUTER TUBE 14.5"	1
10	1258	PUSH PIN SPRING SMALL	2
11	1260	PUSH PIN SPRING BIG	2
12	1253	1/8 BSP GREASE NIPPLE 7.5MM	1
13	1261	HEX BOLT M10X1.50X65(IS1364-1)(8.8)(ZP)	1
14	1263	STEEL BALLS SHEAR BOLT YOKE	24
15	1264	DOWEL PIN DIA 10 X 85	2
16	1297	NYLOCK NUT M8X1.25 (DIN-982)	4
17	1298	NYLOCK NUT M10X1.50 (DIN-982)	1
18	1320	PTO CHAIN	2
19	1611	PTO GUARD LOCK (S6)	4
20	1615	PTO GUARD CONE (S6)	2
21	1631	PTO GUARD COVER OUTER (S6)	2
22	13177	OUTER PIPE PLASTIC (14.5") S6	1
23	13178	INNER PIPE PLASTIC (14.5") S6	1
24	5047	SNAP RING ID.151 x DIA. 4.00	2
25	1675	CROSS WITH SEAL (GOGO)	2
26	30236560	S8 RETAINER RING,INNER (NEW)	1
27	30236561	S8 RETAINER RING OUTER (NEW)	1
28	5095	SHEAR BOLT PTO 6SP 14.5 INCH	1

SLIP CLUTCH PTO PARTS



SLIP CLUTCH PTO PARTS



Sr. No.	Part No.	Description	Qty.
1	1234	PLAIN YOKE 6-SPLINE	1
2	1245	OUTER TUBE YOKE	1
3	1249	INNER TUBE YOKE	1
4	1257	PUSH PIN SMALL	2
5	1259	PUSH PIN BIG	1
6	1247	INNER TUBE 14.5"	1
7	1246	OUTER TUBE 14.5"	1
8	1258	PUSH PIN SPRING SMALL	2
9	1260	PUSH PIN SPRING BIG	1
10	1286	6-SPLINE HUB (CLUTCH TYPE)	1
11	1284	CLUTCH YOKE	1
12	1287	CLUTCH YOKE PLAIN WASHER	1
13	1285	CLUTCH YOKE SLEEVE	1
14	1264	DOWEL PIN DIA 10 X 85	2
15	1297	NYLOCK NUT M8X1.25 (DIN-982)	3
16	1298	NYLOCK NUT M10X1.50 (DIN-982)	8
17	1320	PTO CHAIN	2
18	8078	PLAIN WASHER 10MM (BS-4320)	8
19	1289	FRICITION PLATE	2
20	26034	HEX BOLT M10X1.50X85(IS1364-1)(8.8)(ZP)	8
21	5026	SPRING 27 X 7 X 32	8
22	1611	PTO GUARD LOCK (S6)	4
23	1612	PTO GUARD COVER INNER (S6)	1
24	1615	PTO GUARD CONE (S6)	1
25	1631	PTO GUARD COVER OUTER (S6)	1
26	13177	OUTER PIPE PLASTIC (14.5") S6	1
27	13178	INNER PIPE PLASTIC (14.5") S6	1
28	5047	SNAP RING ID.151 x DIA. 4.00	1
29	1675	CROSS WITH SEAL (GOGO)	2
30	30236560	S8 RETAINER RING,INNER (NEW)	1
31	30236561	S8 RETAINER RING OUTER (NEW)	1
32	5101	SLIP CLUTCH PTO 6SP 14.5 INCH	1

NOTES:

Dotted lines for writing notes.



TirthAgroTechnologyPvt.Ltd.

“SHAKTIMAN”, Survey No.-108/1,

Plot No. B,NH-27, Nr. Bharudi Toll Plaza,

Bhunava (Village), Taluka: Gondal,

Dist.: Rajkot – 360311,

State: Gujarat- INDIA,

Phone: + 91(2827) 661637 / 270537

Fax: + 91(2827) 270457

e-mail: info@shaktimanagro.com

www.shaktimanagro.com