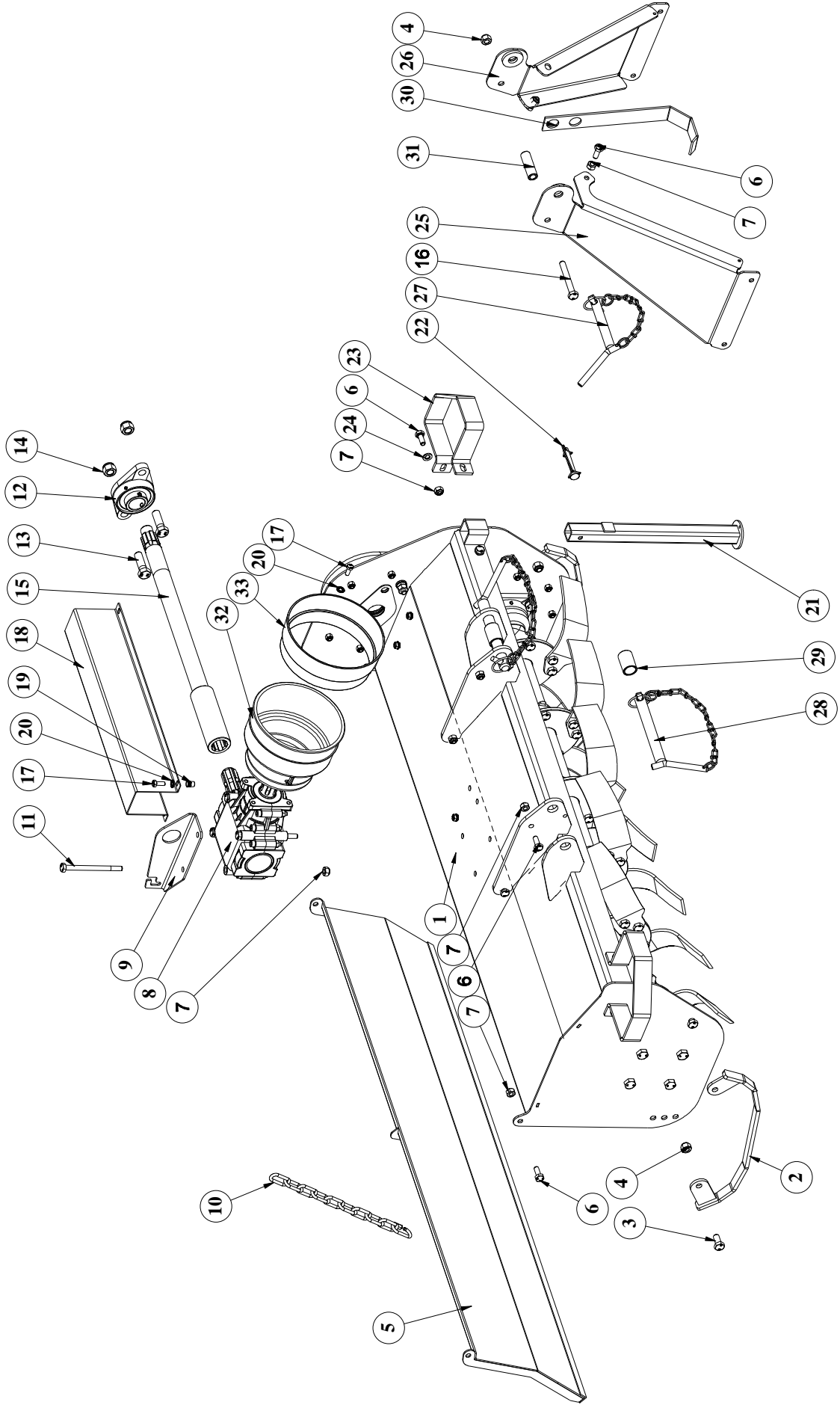


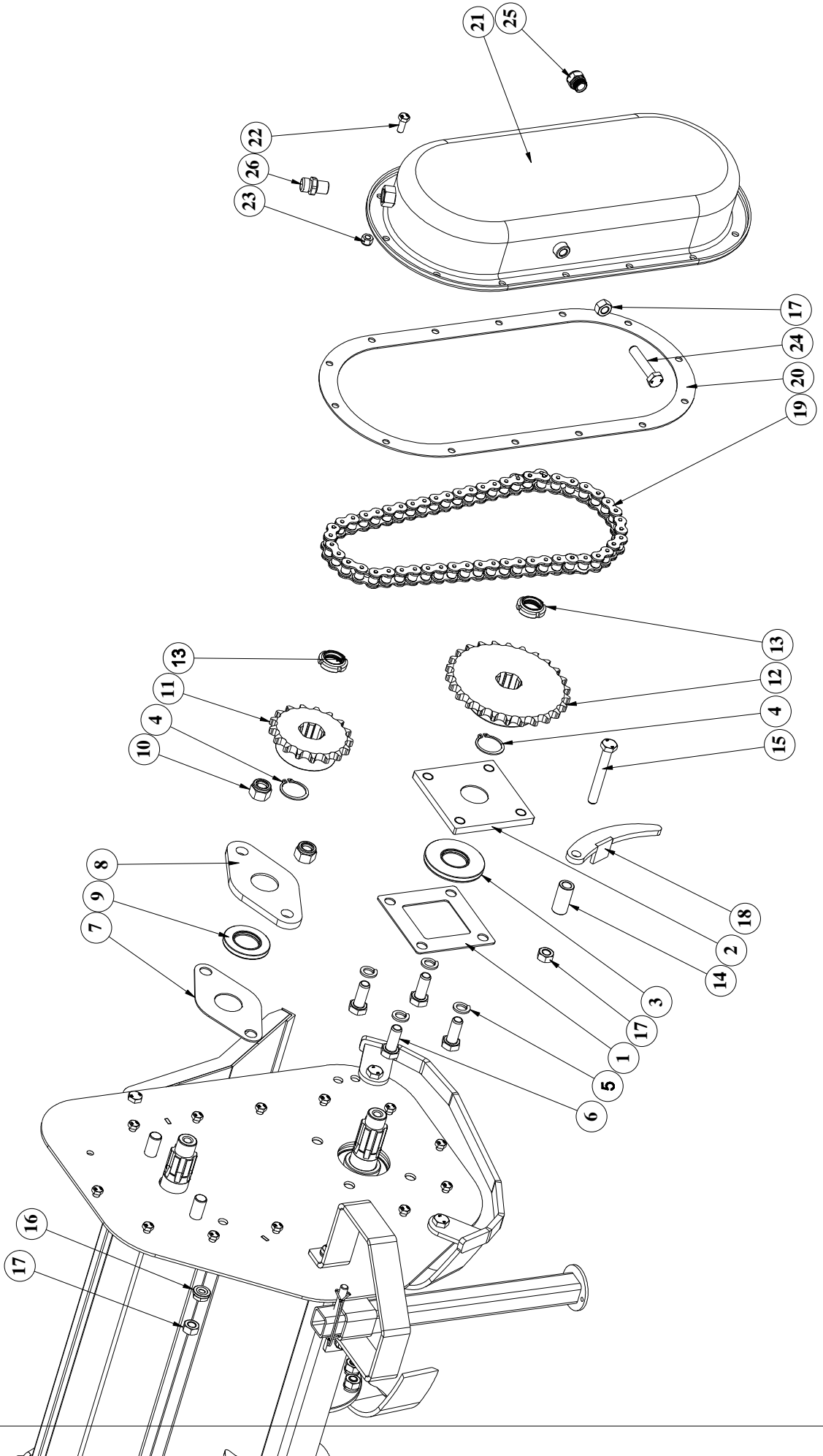
PARTS MANUAL
ULTRA SERIES

FRAME ASSEMBLY-FMA SERIES (085/105/125)



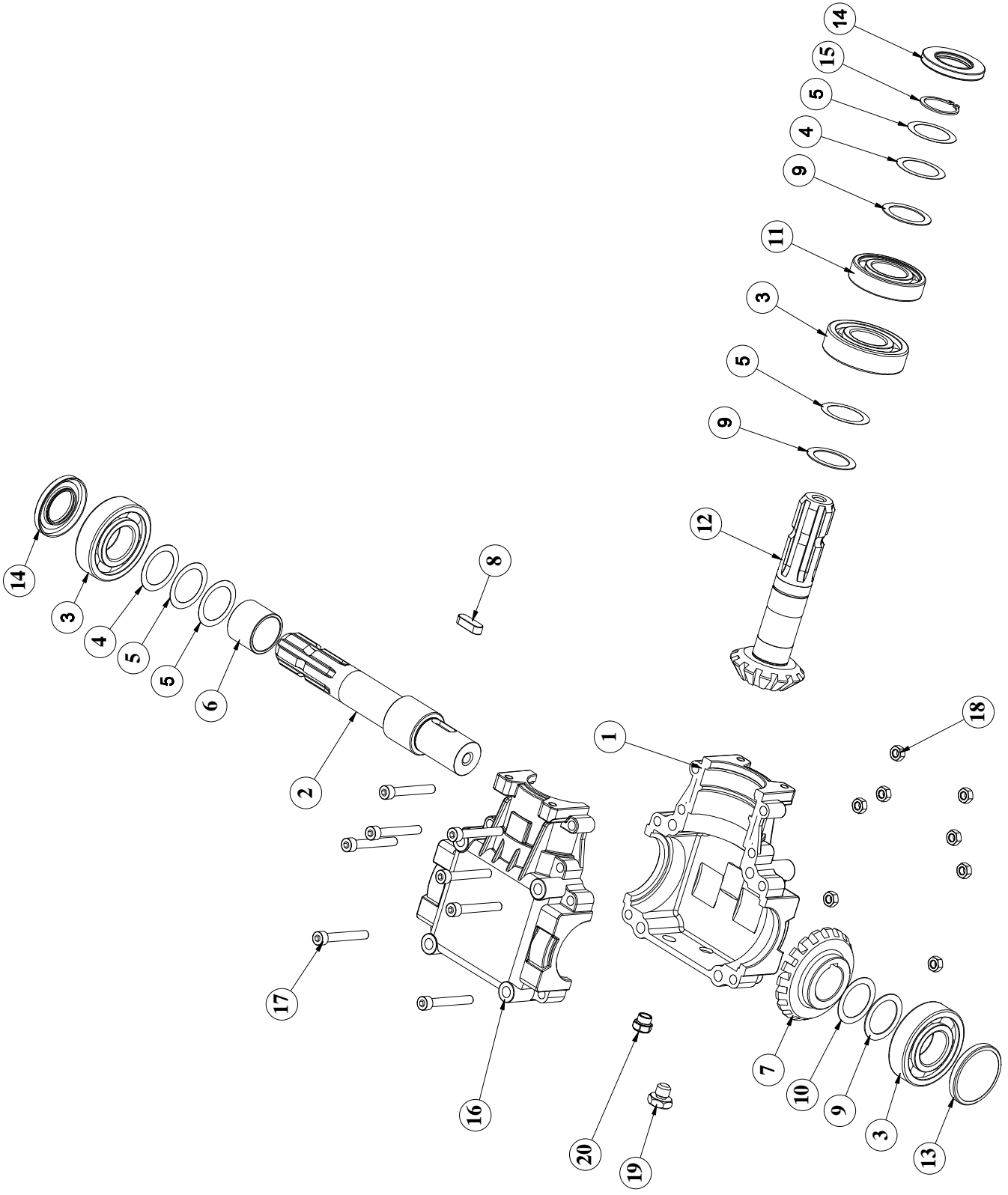
FRAME ASSEMBLY-FMA SERIES (085/105/125)			
Sr No.	MANUAL CODE	DESCRIPTION	QTY.
1	36005	FRAME WELDMENT 125 (ULTRA)	1
	36055	FRAME WELDMENT 105 (ULTRA)	
	36059	FRAME WELDMENT 85 (ULTRA)	
2	36010	DEPTH SKID COMP (ULTRA)	2
3	17474	HEX BOLT M12X1.75X25(DIN933)(8.8)(ZP)	4
4	1209	NYLOCK NUT M12X1.75 (DIN-982)	5
5	36008	BACK FLAP 125 (ULTRA)	1
	36056	BACK FLAP 105 (ULTRA)	
	36060	BACK FLAP 85 (ULTRA)	
6	17270	HEX BOLT M10X1.50X25(DIN933)(8.8)(ZP)	12
7	1298	NYLOCK NUT M10X1.50 (DIN-982)	16
8	36070	GEAR BOX COMP WL (ULTRA)	1
9	36019	BRACKET (ULTRA)	1
10	36042	LIFITING CHAIN WITH QUICK LINK (ULTRA)	1
11	36045	HEX BOLT M10X1.50X130(DIN931)(8.8)(ZP)	4
12	36037	FLANGE BEARING UCFL 207	1
13	17278	HEX BOLT M16X2.00X50(IS1364-1)(8.8)(ZP)	2
14	1231	NYLOCK NUT M16X2.0 (DIN-982)	2
15	36028	DRIVING SHAFT 125 (ULTRA)	1
	36058	DRIVING SHAFT 105 (ULTRA)	
	36062	DRIVING SHAFT 85 (ULTRA)	
16	36044	HEX BOLT M12X1.75X90(DIN933)(8.8)(ZP)	2
17	24117	HEX BOLT M8X1.25X20(IS1364-2)(8.8)(ZP)	6
18	36013	DRIVING SHAFT COVER 125 (ULTRA)	1
	36054	DRIVING SHAFT COVER 105 (ULTRA)	
	36063	DRIVING SHAFT COVER 85 (ULTRA)	
19	36048	RIVSERT RIVET NUT M8X1.25	4
20	36047	WASHER SCHNNOR M8	6
21	36052	CRUTCH WELDMENT(ULTRA)	1
22	36053	ROUND SNAPPER PIN D8xL66	1
23	36012	FENDER (ULTRA)	2
24	8078	PLAIN WASHER 10MM (BS-4320)	4
25	36007	LEFT PART OF 3 POINTS HITCH (ULTRA)	1
26	36073	RH PART OF 3 POINTS HITCH(3 HOLE)(ULTRA)	1
27	36029	HITCH PIN Ø19 WITH HANDLE (ULTRA)	1
28	36030	HITCH PIN Ø22 WITH HANDLE (ULTRA)	2
29	36032	BUSH (DIA. 30 X 24 X 45 L) (ULTRA)	2
30	36020	PTO SHAFT BRACKET (ULTRA)	1
31	36033	BUSH (DIA. 20 X 13 X 65 L) (ULTRA)	1
32	17788	PTO SHAFT GUARD PLASTIC	1
33	36067	PTO GUARD CONE	1

SIDE DRIVE ASSEMBLY-FMA SERIES (085/105/125)



SIDE DRIVE ASSEMBLY-FMA SERIES (085/105/125)			
Sr No.	MANUAL CODE	DESCRIPTION	QTY.
1	36038	GASKET,UCF 207 BEARING (ULTRA)	1
2	36017	UCF SUPPORT PLATE RD SIDE (ULTRA)	1
3	36034	OIL SEAL 35 X 80 X 8	1
4	6024	CIRCLIP EXTERNAL 35MM	2
5	14363	SPRING WASHER M14.00(IS 3063)(ZP)	4
6	17810	HEX BOLT M14X2.00X35(DIN933)(8.8)(ZP)	4
7	36039	GASKET,UCFL 207 BEARING (ULTRA)	1
8	36016	UCFL SUPPORT PLATE (ULTRA)	1
9	36035	OIL SEAL 35 X 62 X 7	1
10	1231	NYLOCK NUT M16X2.0 (DIN-982)	2
11	36014	SPROCKET Z=17 (ULTRA)	1
12	36015	SPROCKET Z=26 (ULTRA)	1
13	33006	GUK SELF LOCKING NUT M25X1.5	2
14	36031	TENSIONER RING (ULTRA)	1
15	36044	HEX BOLT M12X1.75X90(DIN933)(8.8)(ZP)	1
16	36049	LOCK NUT WITH O RING M12X1.75	1
17	17273	HEX NUT M12X1.75(DIN 934)(8)(ZP)	3
18	36011	TENSIONER STOP (ULTRA)	1
19	36041	CHAIN 0.75" PITCH - 52 LINK	1
20	36040	GASKET,CHAIN COVER (ULTRA)	1
21	36001	CHAIN COVER COMP (ULTRA)	1
22	24117	HEX BOLT M8X1.25X20(IS1364-2)(8.8)(ZP)	14
23	1297	NYLOCK NUT M8X1.25 (DIN-982)	14
24	36043	HEX BOLT M12X1.75X60(DIN933)(8.8)(ZP)	1
25	14257	OIL LEVEL GAUGE-3/8" BSP	1
26	14311	AIR BREATHER 3/8" BSP (1GTSSR210)	1

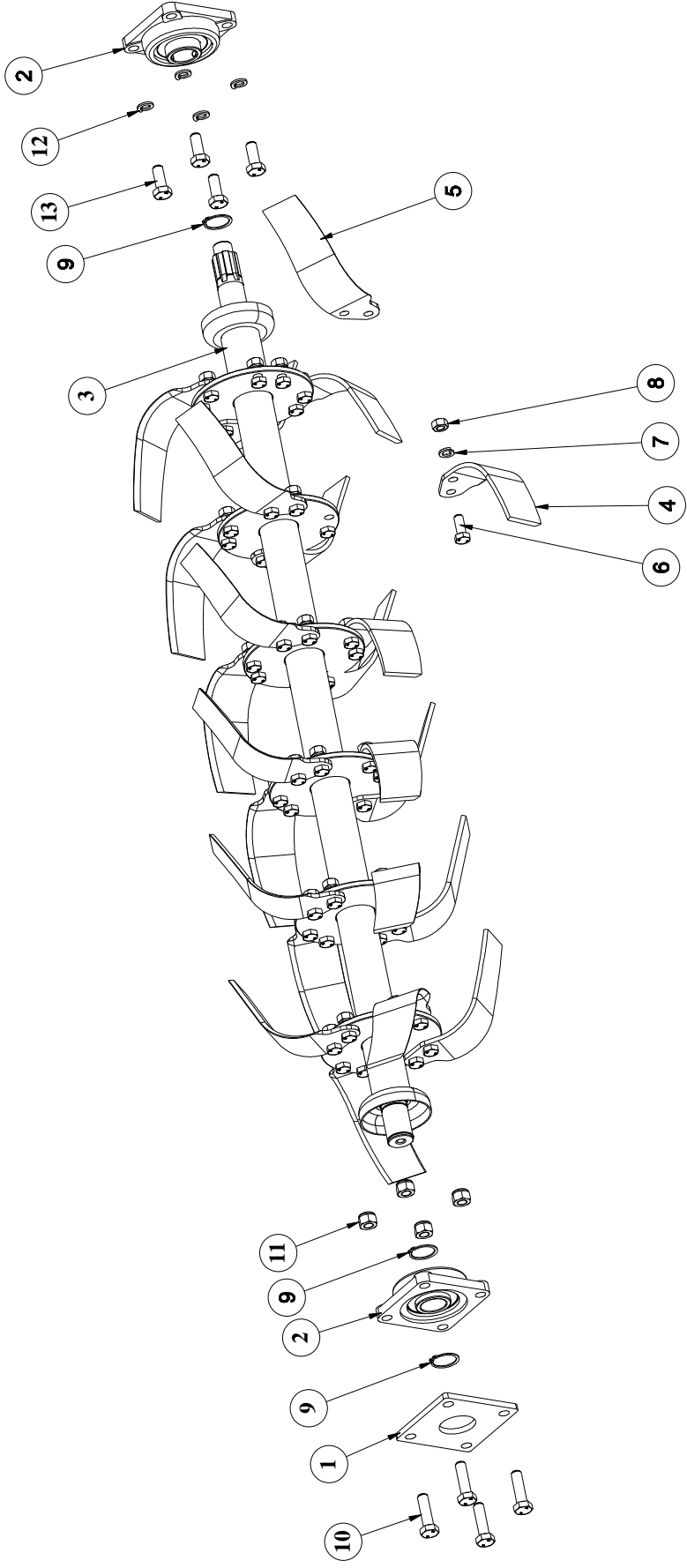
GEAR BOX ASSEMBLY-FMA SERIES (085/105/125)



GEAR BOX ASSEMBLY-FMA SERIES (085/105/125)

Sr No.	MANUAL CODE	DESCRIPTION	QTY.
1	36069	HALF GEAR BOX BOTTOM WL (ULTRA)	1
2	36023	OUTPUT SHAFT (ULTRA)	1
3	1131	BEARING 6307	3
4	36003	SIMS (DIA 48 X 35.5 X 0.20)	2
5	36002	SIMS (DIA 48 X 35.5 X 0.10)	4
6	36064	SPACER DIA 42 X 35.5 X 32.5 MM (ULTRA)	1
7	36025	CROWN 19 TEETH (ULTRA)	1
8	36066	PARALLEL KEY 10 X 8 X 30	1
9	36026	SIMS (DIA 48 X 35.5 X 1.00)	3
10	36004	SIMS (DIA 48 X 35.5 X 0.50)	1
11	10143	BEARING 6207	1
12	36024	PINION SHAFT 13 TEETH (ULTRA)	1
13	14075	OIL SEAL 62 X 7	1
14	36035	OIL SEAL 35 X 62 X 7	2
15	6024	CIRCLIP EXTERNAL 35MM	1
16	36068	HALF GEAR BOX TOP WL (ULTRA)	1
17	18048	ALLEN BOLT M8 X 1.25 X 60	8
18	8181	HEX NUT M8X1.25(IS 1363)(8)(ZP)	8
19	3323	1/4 BSP BOLT WITH O-RING	1
20	14313	OIL LEVEL GAUGE 1/4" BSP (1GTLN110)	1

ROTOR ASSEMBLY-FMA SERIES (085/105/125)



ROTOR ASSEMBLY-FMA SERIES (085/105/125)

Sr No.	MANUAL CODE	DESCRIPTION	QTY.	REMARKS
1	36018	UCF SUPPORT PLATE SD SIDE (ULTRA)	1	
2	36036	SQ FLANGE BEARING UCF 207	2	
3	36009	ROTOR WELDMENT 125 (ULTRA)	1	
	36057	ROTOR WELDMENT 105 (ULTRA)		
	36061	ROTOR WELDMENT 85 (ULTRA)		
4	36071	BLADE C-TYPE LH (60X6) WL (ULTRA)	12	FOR 125
			10	FOR 105
			8	FOR 85
5	36072	BLADE C-TYPE RH (60X6) WL (ULTRA)	12	FOR 125
			10	FOR 105
			8	FOR 85
6	17275	HEX BOLT M12X1.75X30(DIN933)(8.8)(ZP)	48	FOR 125
			40	FOR 105
			32	FOR 85
7	14362	SPRING WASHER M12.00(IS 3063)(ZP)	48	FOR 125
			40	FOR 105
			32	FOR 85
8	17273	HEX NUT M12X1.75(DIN 934)(8)(ZP)	48	FOR 125
			40	FOR 105
			32	FOR 85
9	6024	CIRCLIP EXTERNAL 35MM	3	
10	36046	HEX BOLT M14X2.00X50(DIN933)(8.8)(ZP)	4	
11	1574	NYLOCK NUT M14X2.00 (DIN-982)	4	
12	14363	SPRING WASHER M14.00(IS 3063)(ZP)	4	
13	17810	HEX BOLT M14X2.00X35(DIN933)(8.8)(ZP)	4	